

Colorimetric Report

Page (1/4)



CCalc 2.0
 Copyright © 2011, Denis Freund
 All Rights Reserved
 licensed for PRAD ProAdviser

Test Device	liyama_XB3070WQS
Target	AdobeRGB
Display Profile	not considered
Rendering Intent	-

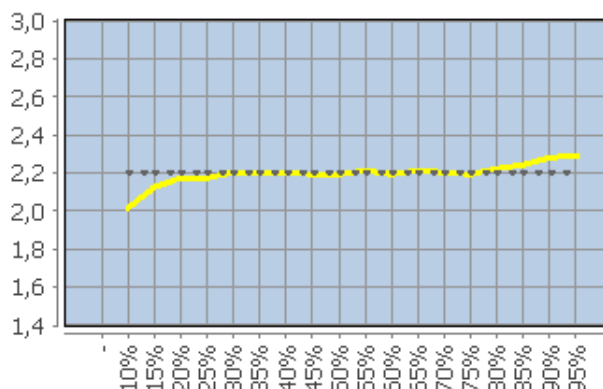
White Point / CCT Kelvin	7597K
White Point XYZ (normalized)	96.79 100.0 126.65
DeltaE to D50/ D65	30.7/ 10.77
DeltaE to Blackbody Curve *	3.58
Assumed Target Whitepoint	7600K
DeltaE to Assumed Target Whitepoint	3.57
Brightness / cd/m ² **	134.0
Black Point / cd/m ² **	0.16
Contrast / x:1	838:1
Gradation (Average)	2.19

* Based on CCT ** Measured with X-Rite DTP94 or comparable probe

	Percent	Kelvin	deltaC	deltaE	Gamma
	5	-	-	-	-
	10	7322	0.38	3.25	2.02
	15	7142	0.84	1.6	2.12
	20	7521	0.15	0.54	2.17
	25	7564	0.15	0.75	2.17
	30	7531	0.17	0.24	2.2
	35	7625	0.52	0.52	2.2
	40	7647	0.55	0.55	2.2
	45	7594	0.3	0.38	2.19
	50	7617	0.21	0.43	2.19
	55	7699	0.46	0.51	2.21
	60	7665	0.46	0.49	2.19
	65	7627	0.89	0.89	2.21
	70	7665	0.42	0.46	2.2
	75	7684	0.43	0.43	2.19
	80	7676	0.4	0.43	2.22
	85	7666	0.37	0.4	2.24
	90	7718	0.85	0.86	2.28
	95	7738	0.75	0.79	2.29
	100	7596	-	-	-
	Average	-	0.47*	0.61*	2.19
	Maximum	-	0.89*	1.6*	-
	Range	-	1.48*	-	-

* Only luminance > 1% considered
 Without Black Point Compensation

Corresponding Gamma



Colorimetric Report

Page (2/4)



CCalc 2.0
 Copyright © 2011, Denis Freund
 All Rights Reserved
 licensed for PRAD ProAdviser

Test Device	liyama_XB3070WQS
Target	AdobeRGB
Display Profile	not considered
Rendering Intent	-

	RGB	deltaC	deltaH	deltaL	deltaE94
	255 0 0	1.18	1.24	3.56	3.59
	0 255 0	11.55	1.14	0.48	1.49
	0 0 255	0.37	3.84	0.02	1.27
	0 255 255	7.58	0.47	0.94	1.9
	255 0 255	3.53	1.38	2.69	2.79
	255 255 0	4.83	1.55	0.74	1.26
	170 85 85	1.84	1.27	1.16	1.48
	85 170 85	4.64	0.94	0.19	1.18
	85 85 170	1.13	0.98	0.49	0.8
	85 170 170	3.62	0.35	0.68	1.44
	170 85 170	0.0	1.04	0.78	0.95
	170 170 85	2.28	0.82	0.27	0.89
	229 0 0	0.63	1.5	3.33	3.38
	204 0 0	0.46	1.16	3.1	3.13
	178 0 0	0.18	1.26	2.48	2.54
	153 0 0	1.1	1.98	2.31	2.49
	127 0 0	1.28	2.02	1.82	2.1
	102 0 0	0.7	1.93	1.0	1.45
	76 0 0	1.38	1.42	0.27	1.01
	0 229 0	11.24	1.09	0.21	1.48
	0 204 0	10.36	0.91	0.4	1.5
	0 178 0	9.7	1.01	0.4	1.54
	0 153 0	8.45	0.74	0.36	1.45
	0 127 0	8.63	0.61	0.36	1.64
	0 102 0	8.53	0.43	0.01	1.79
	0 76 0	5.75	0.63	0.66	1.61
	0 0 229	0.36	3.22	0.13	1.13
	0 0 204	0.46	2.63	0.51	1.1
	0 0 178	0.96	1.98	0.7	1.06
	0 0 153	1.03	1.47	1.19	1.35
	0 0 127	0.04	1.35	1.56	1.67
	0 0 102	0.46	0.51	2.2	2.22
	0 0 76	2.96	1.64	2.34	2.66
	0 229 229	7.39	0.81	0.75	1.89
	0 204 204	6.4	0.05	0.84	1.78
	0 178 178	5.81	0.04	1.01	1.83
	0 153 153	5.24	0.11	0.93	1.76
	0 127 127	4.65	0.17	0.94	1.74
	0 102 102	4.58	0.02	0.5	1.68
	0 76 76	3.27	1.14	0.74	1.69
	229 0 229	3.22	1.31	2.46	2.57
	204 0 204	2.55	1.47	2.38	2.5
	178 0 178	2.53	1.22	1.78	1.92
	153 0 153	1.99	1.02	1.69	1.8
	127 0 127	1.49	1.08	1.23	1.39
	102 0 102	0.63	0.83	0.97	1.08
	76 0 76	0.76	0.63	0.46	0.64

Colorimetric Report

Page (3/4)



CCalc 2.0
 Copyright © 2011, Denis Freund
 All Rights Reserved
 licensed for PRAD ProAdviser

Test Device	liyama_XB3070WQS
Target	AdobeRGB
Display Profile	not considered
Rendering Intent	-

	RGB	deltaC	deltaH	deltaL	deltaE94
	229 229 0	4.57	1.23	0.83	1.27
	204 204 0	4.64	1.57	0.84	1.4
	178 178 0	3.86	0.92	0.48	1.03
	153 153 0	3.83	1.1	0.45	1.12
	127 127 0	3.88	0.37	0.31	1.06
	102 102 0	3.63	0.08	0.41	1.12
	76 76 0	3.15	0.76	0.18	1.17
	255 25 25	0.07	2.03	3.41	3.49
	255 51 51	1.49	3.17	2.97	3.23
	255 76 76	1.9	3.05	2.7	3.01
	255 102 102	2.44	3.09	2.22	2.68
	255 127 127	2.76	2.41	1.67	2.17
	255 153 153	2.56	1.83	1.31	1.83
	255 178 178	2.34	1.44	0.94	1.56
	255 204 204	1.32	0.86	0.76	1.16
	255 229 229	0.44	1.29	0.58	1.26
	25 255 25	11.48	1.23	0.47	1.5
	51 255 51	10.98	1.52	0.65	1.6
	76 255 76	8.98	1.53	0.57	1.46
	102 255 102	7.82	1.25	0.57	1.42
	127 255 127	6.51	1.18	0.53	1.38
	153 255 153	4.31	0.66	0.43	1.08
	178 255 178	3.57	0.58	0.26	1.06
	204 255 204	1.19	0.07	0.14	0.46
	229 255 229	0.87	0.41	0.02	0.57
	25 25 255	0.3	3.46	0.33	1.2
	51 51 255	1.53	2.68	0.61	1.15
	76 76 255	1.42	2.39	0.51	1.08
	102 102 255	2.03	1.73	0.52	0.99
	127 127 255	2.41	1.21	0.79	1.12
	153 153 255	1.86	0.7	0.47	0.8
	178 178 255	1.36	0.26	0.43	0.66
	204 204 255	0.21	0.14	0.01	0.13
	229 229 255	0.22	0.27	0.19	0.33
	25 255 255	7.69	0.51	0.95	1.94
	51 255 255	7.55	0.54	1.02	1.99
	76 255 255	7.08	0.62	0.91	1.92
	102 255 255	6.3	0.47	0.86	1.83
	127 255 255	5.31	0.22	0.81	1.7
	153 255 255	4.17	0.25	0.65	1.51
	178 255 255	3.01	0.0	0.53	1.27
	204 255 255	1.49	0.03	0.24	0.76
	229 255 255	0.58	0.11	0.02	0.38

Colorimetric Report

Page (4/4)



Ccalc 2.0
 Copyright © 2011, Denis Freund
 All Rights Reserved
 licensed for PRAD ProAdviser

Test Device	liyama_XB3070WQS
Target	AdobeRGB
Display Profile	not considered
Rendering Intent	-

	RGB	deltaC	deltaH	deltaL	deltaE94
	255 25 255	3.34	1.38	2.64	2.74
	255 51 255	2.26	1.27	2.3	2.38
	255 76 255	1.13	1.15	1.94	2.0
	255 102 255	0.15	1.29	1.56	1.65
	255 127 255	0.62	1.33	1.13	1.28
	255 153 255	0.96	1.25	0.86	1.08
	255 178 255	1.34	1.12	0.55	0.93
	255 204 255	0.48	0.8	0.57	0.79
	255 229 255	0.37	0.38	0.46	0.58
	255 255 25	5.17	1.56	0.78	1.33
	255 255 51	4.87	1.85	0.58	1.29
	255 255 76	4.5	1.66	0.59	1.28
	255 255 102	4.17	1.35	0.51	1.22
	255 255 127	3.79	1.2	0.44	1.21
	255 255 153	2.87	1.09	0.36	1.1
	255 255 178	2.24	0.92	0.34	1.04
	255 255 204	1.33	0.36	0.24	0.7
	255 255 229	1.3	0.13	0.39	0.9
	213 255 0	5.07	1.5	0.41	1.09
	159 191 0	4.25	1.26	0.1	1.0
	106 128 0	4.23	0.53	0.07	1.08
	0 255 85	10.03	2.05	0.65	1.6
	0 191 64	8.58	1.6	0.66	1.61
	0 128 42	7.02	1.28	0.46	1.58
	0 128 255	3.3	2.29	1.31	1.84
	0 96 191	2.34	2.21	1.05	1.67
	0 64 128	2.42	1.01	1.1	1.48
	170 0 255	2.39	1.23	1.49	1.6
	127 0 191	1.53	0.72	0.95	1.03
	85 0 128	1.17	0.15	0.61	0.67
	255 0 42	0.32	3.42	3.54	3.77
	191 0 32	0.48	2.81	2.67	2.93
	128 0 21	1.5	2.68	1.91	2.36
	170 85 0	2.32	0.61	1.44	1.56
	0 170 85	7.93	1.89	0.37	1.72
	85 0 170	0.46	1.06	0.28	0.54
	0 85 170	2.27	1.94	0.88	1.51
	170 0 85	0.5	2.86	2.11	2.53
	85 170 0	6.95	0.02	0.0	1.25
	123 127 127	0.05	0.23	0.3	0.38
	127 123 127	0.39	0.38	0.15	0.52
	127 127 123	0.31	0.07	0.28	0.4
	Average	3.31	1.19	0.96	1.52
	Maximum	11.55	3.84	3.56	3.77