

Colorimetric Report

Page (1/5)



CCalc 2.0
 Copyright © 2011, Denis Freund
 All Rights Reserved
 licensed for PRAD ProAdviser

| | |
|------------------|-----------------------|
| Test Device | liyama_XB3070WQS |
| Target | sRGB |
| Display Profile | considered |
| Rendering Intent | Relative colorimetric |

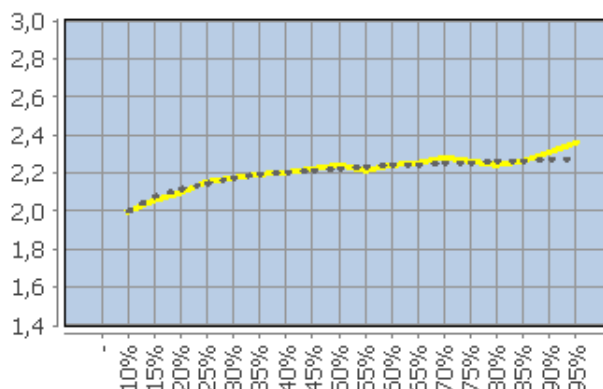
| | |
|-------------------------------------|--------------------|
| White Point / CCT Kelvin | 6578K |
| White Point XYZ (normalized) | 94.63 100.0 109.31 |
| DeltaE to D50/ D65 | 19.89/ 0.78 |
| DeltaE to Blackbody Curve * | 0.75 |
| Assumed Target Whitepoint | 6600K |
| DeltaE to Assumed Target Whitepoint | 0.86 |
| Brightness / cd/m ² ** | 143.8 |
| Black Point / cd/m ² ** | 0.14 |
| Contrast / x:1 | 1027:1 |
| Gradation (Average) | 2.21 |

* Based on CCT ** Measured with X-Rite DTP94 or comparable probe

| | Percent | Kelvin | deltaC | deltaE | Gamma |
|--|---------|--------|--------|--------|-------|
| | 5 | - | - | - | - |
| | 10 | 6299 | 0.64 | 0.7 | 2.0 |
| | 15 | 6537 | 0.12 | 0.16 | 2.06 |
| | 20 | 6254 | 0.87 | 0.98 | 2.09 |
| | 25 | 6691 | 0.38 | 0.4 | 2.15 |
| | 30 | 6442 | 0.5 | 0.58 | 2.17 |
| | 35 | 6498 | 1.2 | 1.2 | 2.19 |
| | 40 | 6603 | 0.24 | 0.27 | 2.2 |
| | 45 | 6567 | 0.05 | 0.05 | 2.22 |
| | 50 | 6574 | 0.77 | 0.77 | 2.24 |
| | 55 | 6476 | 0.65 | 0.66 | 2.21 |
| | 60 | 6476 | 0.7 | 0.7 | 2.24 |
| | 65 | 6561 | 0.87 | 0.88 | 2.25 |
| | 70 | 6575 | 0.18 | 0.19 | 2.28 |
| | 75 | 6503 | 0.88 | 0.88 | 2.26 |
| | 80 | 6521 | 0.38 | 0.43 | 2.24 |
| | 85 | 6530 | 0.5 | 0.52 | 2.26 |
| | 90 | 6537 | 0.34 | 0.34 | 2.31 |
| | 95 | 6547 | 0.95 | 0.99 | 2.36 |
| | 100 | 6577 | - | - | - |
| | Average | - | 0.57* | 0.59* | 2.21 |
| | Maximum | - | 1.2* | 1.2* | - |
| | Range | - | 1.44* | - | - |

* Only luminance > 1% considered
 Without Black Point Compensation

Corresponding Gamma



Colorimetric Report

Page (2/5)



CCalc 2.0
 Copyright © 2011, Denis Freund
 All Rights Reserved
 licensed for PRAD ProAdviser

| | |
|------------------|-----------------------|
| Test Device | liyama_XB3070WQS |
| Target | sRGB |
| Display Profile | considered |
| Rendering Intent | Relative colorimetric |

| | RGB | deltaC | deltaH | deltaL | deltaE94 |
|--|------------|--------|--------|--------|----------|
| | 255 0 0 | 0.6 | 0.23 | 0.05 | 0.15 |
| | 0 255 0 | 0.93 | 0.74 | 0.16 | 0.34 |
| | 0 0 255 | 1.7 | 0.67 | 0.49 | 0.59 |
| | 0 255 255 | 0.99 | 0.32 | 0.11 | 0.37 |
| | 255 0 255 | 0.1 | 0.09 | 0.17 | 0.18 |
| | 255 255 0 | 0.58 | 0.41 | 0.2 | 0.28 |
| | 170 85 85 | 0.74 | 0.45 | 0.08 | 0.4 |
| | 85 170 85 | 0.91 | 0.01 | 0.03 | 0.26 |
| | 85 85 170 | 0.19 | 0.39 | 0.01 | 0.23 |
| | 85 170 170 | 0.22 | 0.31 | 0.11 | 0.26 |
| | 170 85 170 | 0.33 | 0.23 | 0.26 | 0.3 |
| | 170 170 85 | 0.25 | 1.32 | 0.03 | 0.79 |
| | 229 0 0 | 0.05 | 0.05 | 0.05 | 0.05 |
| | 204 0 0 | 0.73 | 0.97 | 0.18 | 0.48 |
| | 178 0 0 | 1.44 | 0.82 | 0.02 | 0.49 |
| | 153 0 0 | 0.98 | 1.53 | 0.48 | 0.91 |
| | 127 0 0 | 0.58 | 0.29 | 0.05 | 0.22 |
| | 102 0 0 | 0.61 | 0.39 | 0.01 | 0.29 |
| | 76 0 0 | 0.19 | 1.66 | 0.37 | 1.11 |
| | 0 229 0 | 0.45 | 0.67 | 0.03 | 0.27 |
| | 0 204 0 | 1.07 | 0.67 | 0.42 | 0.54 |
| | 0 178 0 | 0.8 | 0.81 | 0.2 | 0.43 |
| | 0 153 0 | 1.3 | 0.78 | 0.4 | 0.6 |
| | 0 127 0 | 0.95 | 0.6 | 0.0 | 0.37 |
| | 0 102 0 | 0.67 | 1.24 | 0.37 | 0.77 |
| | 0 76 0 | 0.58 | 1.62 | 0.44 | 1.04 |
| | 0 0 229 | 2.32 | 0.19 | 0.73 | 0.82 |
| | 0 0 204 | 1.83 | 0.32 | 0.55 | 0.64 |
| | 0 0 178 | 1.88 | 0.21 | 0.73 | 0.81 |
| | 0 0 153 | 2.75 | 0.17 | 0.68 | 0.87 |
| | 0 0 127 | 1.15 | 0.62 | 0.12 | 0.4 |
| | 0 0 102 | 0.16 | 1.2 | 0.02 | 0.59 |
| | 0 0 76 | 0.47 | 1.19 | 0.07 | 0.68 |
| | 0 229 229 | 0.02 | 0.98 | 0.2 | 0.62 |
| | 0 204 204 | 0.8 | 0.23 | 0.04 | 0.31 |
| | 0 178 178 | 0.25 | 0.22 | 0.04 | 0.17 |
| | 0 153 153 | 0.31 | 0.44 | 0.07 | 0.32 |
| | 0 127 127 | 0.12 | 0.31 | 0.02 | 0.22 |
| | 0 102 102 | 0.09 | 0.99 | 0.36 | 0.8 |
| | 0 76 76 | 0.45 | 0.27 | 0.17 | 0.35 |
| | 229 0 229 | 1.0 | 0.05 | 0.1 | 0.2 |
| | 204 0 204 | 0.94 | 0.27 | 0.16 | 0.26 |
| | 178 0 178 | 0.07 | 0.0 | 0.29 | 0.29 |
| | 153 0 153 | 0.75 | 0.18 | 0.39 | 0.43 |
| | 127 0 127 | 0.74 | 0.12 | 0.18 | 0.26 |
| | 102 0 102 | 0.4 | 0.28 | 0.17 | 0.25 |
| | 76 0 76 | 1.13 | 0.01 | 0.21 | 0.41 |

Colorimetric Report

Page (3/5)



CCalc 2.0
 Copyright © 2011, Denis Freund
 All Rights Reserved
 licensed for PRAD ProAdviser

| | |
|------------------|-----------------------|
| Test Device | liyama_XB3070WQS |
| Target | sRGB |
| Display Profile | considered |
| Rendering Intent | Relative colorimetric |

| | RGB | deltaC | deltaH | deltaL | deltaE94 |
|--|-------------|--------|--------|--------|----------|
| | 229 229 0 | 0.53 | 0.8 | 0.25 | 0.44 |
| | 204 204 0 | 0.62 | 1.97 | 0.34 | 0.95 |
| | 178 178 0 | 0.49 | 0.98 | 0.07 | 0.48 |
| | 153 153 0 | 0.36 | 1.76 | 0.26 | 0.92 |
| | 127 127 0 | 1.0 | 1.17 | 0.53 | 0.87 |
| | 102 102 0 | 0.45 | 0.26 | 0.06 | 0.21 |
| | 76 76 0 | 0.92 | 1.2 | 0.21 | 0.84 |
| | 255 25 25 | 0.46 | 0.07 | 0.07 | 0.11 |
| | 255 51 51 | 0.21 | 0.48 | 0.03 | 0.21 |
| | 255 76 76 | 0.41 | 0.3 | 0.12 | 0.21 |
| | 255 102 102 | 0.71 | 0.96 | 0.06 | 0.52 |
| | 255 127 127 | 0.12 | 0.08 | 0.14 | 0.15 |
| | 255 153 153 | 0.73 | 0.75 | 0.04 | 0.53 |
| | 255 178 178 | 0.95 | 0.8 | 0.05 | 0.68 |
| | 255 204 204 | 0.11 | 0.02 | 0.25 | 0.25 |
| | 255 229 229 | 0.29 | 0.11 | 0.22 | 0.32 |
| | 25 255 25 | 0.98 | 1.06 | 0.12 | 0.43 |
| | 51 255 51 | 1.11 | 1.2 | 0.14 | 0.51 |
| | 76 255 76 | 1.23 | 1.18 | 0.26 | 0.58 |
| | 102 255 102 | 0.11 | 0.83 | 0.18 | 0.39 |
| | 127 255 127 | 0.86 | 0.51 | 0.02 | 0.3 |
| | 153 255 153 | 0.89 | 0.06 | 0.07 | 0.24 |
| | 178 255 178 | 1.07 | 0.14 | 0.14 | 0.37 |
| | 204 255 204 | 0.59 | 0.53 | 0.14 | 0.45 |
| | 229 255 229 | 0.09 | 0.86 | 0.03 | 0.69 |
| | 25 25 255 | 2.12 | 0.77 | 0.2 | 0.45 |
| | 51 51 255 | 2.11 | 0.98 | 0.44 | 0.66 |
| | 76 76 255 | 1.03 | 0.25 | 0.08 | 0.22 |
| | 102 102 255 | 1.27 | 0.35 | 0.05 | 0.3 |
| | 127 127 255 | 1.13 | 0.81 | 0.44 | 0.65 |
| | 153 153 255 | 0.12 | 0.26 | 0.23 | 0.27 |
| | 178 178 255 | 0.6 | 0.18 | 0.22 | 0.32 |
| | 204 204 255 | 1.03 | 0.33 | 0.26 | 0.58 |
| | 229 229 255 | 0.03 | 0.31 | 0.0 | 0.25 |
| | 25 255 255 | 0.38 | 0.34 | 0.05 | 0.24 |
| | 51 255 255 | 0.43 | 0.29 | 0.01 | 0.22 |
| | 76 255 255 | 0.84 | 0.16 | 0.01 | 0.29 |
| | 102 255 255 | 0.32 | 0.62 | 0.14 | 0.42 |
| | 127 255 255 | 0.37 | 0.41 | 0.0 | 0.3 |
| | 153 255 255 | 0.06 | 0.79 | 0.11 | 0.55 |
| | 178 255 255 | 0.73 | 0.44 | 0.0 | 0.47 |
| | 204 255 255 | 0.56 | 0.23 | 0.11 | 0.38 |
| | 229 255 255 | 0.27 | 0.02 | 0.13 | 0.23 |

Colorimetric Report

Page (4/5)



CCalc 2.0
 Copyright © 2011, Denis Freund
 All Rights Reserved
 licensed for PRAD ProAdviser

| | |
|------------------|-----------------------|
| Test Device | liyama_XB3070WQS |
| Target | sRGB |
| Display Profile | considered |
| Rendering Intent | Relative colorimetric |

| | RGB | deltaC | deltaH | deltaL | deltaE94 |
|--|-------------|--------|--------|--------|----------|
| | 255 25 255 | 0.22 | 0.07 | 0.21 | 0.21 |
| | 255 51 255 | 0.09 | 0.07 | 0.18 | 0.18 |
| | 255 76 255 | 0.18 | 0.0 | 0.01 | 0.04 |
| | 255 102 255 | 0.36 | 0.47 | 0.28 | 0.35 |
| | 255 127 255 | 1.12 | 0.17 | 0.47 | 0.53 |
| | 255 153 255 | 0.09 | 0.27 | 0.15 | 0.2 |
| | 255 178 255 | 0.22 | 0.48 | 0.23 | 0.37 |
| | 255 204 255 | 0.67 | 0.28 | 0.15 | 0.36 |
| | 255 229 255 | 0.23 | 0.25 | 0.12 | 0.27 |
| | 255 255 25 | 0.19 | 0.44 | 0.2 | 0.27 |
| | 255 255 51 | 0.89 | 0.42 | 0.19 | 0.32 |
| | 255 255 76 | 0.74 | 0.35 | 0.22 | 0.31 |
| | 255 255 102 | 0.94 | 0.19 | 0.24 | 0.34 |
| | 255 255 127 | 1.21 | 0.04 | 0.29 | 0.43 |
| | 255 255 153 | 1.36 | 0.25 | 0.34 | 0.55 |
| | 255 255 178 | 0.37 | 0.15 | 0.13 | 0.21 |
| | 255 255 204 | 0.51 | 0.17 | 0.25 | 0.36 |
| | 255 255 229 | 0.13 | 0.04 | 0.08 | 0.12 |
| | 213 255 0 | 0.22 | 1.52 | 0.03 | 0.61 |
| | 159 191 0 | 0.33 | 1.27 | 0.33 | 0.67 |
| | 106 128 0 | 0.89 | 0.45 | 0.28 | 0.44 |
| | 0 255 85 | 1.12 | 0.87 | 0.15 | 0.42 |
| | 0 191 64 | 0.77 | 0.65 | 0.02 | 0.33 |
| | 0 128 42 | 0.24 | 0.59 | 0.0 | 0.31 |
| | 0 128 255 | 1.13 | 1.28 | 0.61 | 0.9 |
| | 0 96 191 | 0.11 | 0.08 | 0.2 | 0.21 |
| | 0 64 128 | 1.86 | 1.41 | 0.58 | 1.23 |
| | 170 0 255 | 1.15 | 0.27 | 0.03 | 0.2 |
| | 127 0 191 | 1.08 | 0.41 | 0.32 | 0.42 |
| | 85 0 128 | 1.09 | 0.21 | 0.32 | 0.43 |
| | 255 0 42 | 0.42 | 0.06 | 0.04 | 0.09 |
| | 191 0 32 | 0.12 | 0.15 | 0.1 | 0.13 |
| | 128 0 21 | 0.19 | 0.56 | 0.21 | 0.37 |
| | 170 85 0 | 0.36 | 1.39 | 0.26 | 0.77 |
| | 0 170 85 | 0.74 | 0.33 | 0.08 | 0.26 |
| | 85 0 170 | 0.82 | 0.46 | 0.58 | 0.64 |
| | 0 85 170 | 0.19 | 0.08 | 0.1 | 0.12 |
| | 170 0 85 | 0.18 | 0.27 | 0.06 | 0.16 |
| | 85 170 0 | 0.82 | 0.62 | 0.3 | 0.45 |
| | 123 127 127 | 0.22 | 0.76 | 0.03 | 0.77 |
| | 127 123 127 | 0.58 | 0.09 | 0.05 | 0.53 |
| | 127 127 123 | 0.32 | 0.55 | 0.09 | 0.61 |
| | Average | 0.67 | 0.53 | 0.19 | 0.43 |
| | Maximum | 2.75 | 1.97 | 0.73 | 1.23 |

Colorimetric Report

Page (5/5)



CCalc 2.0
Copyright © 2011, Denis Freund
All Rights Reserved
licensed for PRAD ProAdviser

| | |
|------------------|-----------------------|
| Test Device | Iiyama_XB3070WQS |
| Target | sRGB |
| Display Profile | considered |
| Rendering Intent | Relative colorimetric |

| Property | Device adjustments |
|----------------------|--------------------|
| Backlight brightness | |
| Brightness | 0 |
| Contrast | |
| RGB Gain | 100 93 100 |
| Gradation | |
| Other | |