

Colorimetric Report

Page (1/4)



CCalc 2.3
 Copyright © 2016, Denis Freund
 All Rights Reserved
 lic. for PRAD ProAdviser

| | |
|------------------|---------------------------------------|
| Date | Saturday, December 10, 2016 |
| Tester | |
| Display | Iiyama X2888HS |
| Sensor | X-Rite i1 Pro |
| Testchart | In accordance with ISO 12646:2007 (1) |
| Target | sRGB |
| Display Profile | Not considered |
| Rendering Intent | - |

(1) Five equally spaced code values for each channel

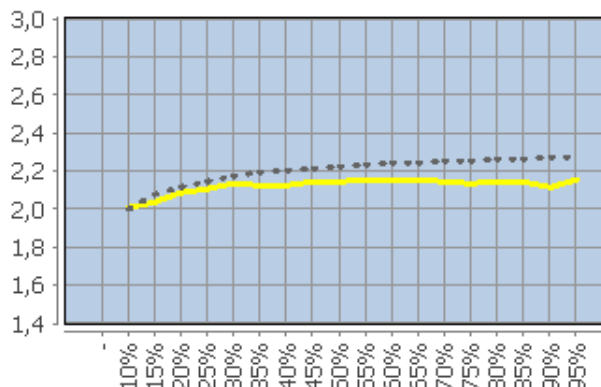
| | |
|-------------------------------------|-------------------------|
| White Point (CCT) | 6704 Kelvin |
| White Point XYZ (normalized) | 93.49 100.00 109.23 |
| DeltaE to D50/ D65 | 20.25/ 2.75 |
| Assumed Target Whitepoint (2) | 6700 Kelvin |
| DeltaE to Assumed Target Whitepoint | 3.02 |
| Brightness (3) | 88.30 cd/m ² |
| Black Point (3) | 0.03 cd/m ² |
| Contrast (x:1) | 2943:1 |
| Gradation (Average) | 2.12 |

(2) Daylight (3) Measured separately

| | Percent | Kelvin | Delta C | Delta E | Gamma |
|--|-------------|--------|---------|---------|-------|
| | 5 | - | - | - | - |
| | 10 | 7153 | 0.81 | 0.81 | 2.01 |
| | 15 | 6891 | 0.49 | 0.80 | 2.04 |
| | 20 | 6917 | 0.67 | 0.95 | 2.08 |
| | 25 | 6809 | 0.31 | 1.00 | 2.10 |
| | 30 | 6780 | 0.71 | 1.15 | 2.13 |
| | 35 | 6814 | 0.42 | 1.33 | 2.12 |
| | 40 | 6812 | 0.44 | 1.49 | 2.12 |
| | 45 | 6768 | 0.28 | 1.34 | 2.14 |
| | 50 | 6734 | 0.23 | 1.35 | 2.14 |
| | 55 | 6786 | 0.46 | 1.32 | 2.15 |
| | 60 | 6732 | 0.28 | 1.31 | 2.15 |
| | 65 | 6795 | 0.58 | 1.35 | 2.15 |
| | 70 | 6733 | 0.34 | 1.24 | 2.14 |
| | 75 | 6745 | 0.32 | 1.20 | 2.13 |
| | 80 | 6739 | 0.33 | 0.92 | 2.14 |
| | 85 | 6726 | 0.17 | 0.72 | 2.14 |
| | 90 | 6707 | 0.04 | 0.60 | 2.11 |
| | 95 | 6719 | 0.12 | 0.27 | 2.15 |
| | 100 (4) | 6704 | - | - | - |
| | Average (5) | - | 0.39 | 1.06 | 2.12 |
| | Maximum (5) | - | 0.81 | 1.49 | - |
| | Range (5) | - | 0.95 | - | - |

(4) Visual adaptation to display whitepoint is assumed
 (5) Only luminance > 1% considered

Corresponding Gamma



Colorimetric Report

Page (2/4)



C Calc 2.3
 Copyright © 2016, Denis Freund
 All Rights Reserved
 lic. for PRAD ProAdviser

| | |
|------------------|---------------------------------------|
| Date | Saturday, December 10, 2016 |
| Tester | |
| Display | Iiyama X2888HS |
| Sensor | X-Rite i1 Pro |
| Testchart | In accordance with ISO 12646:2007 (1) |
| Target | sRGB |
| Display Profile | Not considered |
| Rendering Intent | - |

(1) Five equally spaced code values for each channel

| | RGB | Delta C | Delta H | Delta L | Delta E94 |
|--|------------|---------|---------|---------|-----------|
| | 0 0 0 | 0.17 | 0.00 | 0.75 | 0.77 |
| | 0 0 63 | 2.51 | 3.21 | 0.19 | 2.13 |
| | 0 0 127 | 3.15 | 2.87 | 0.05 | 1.48 |
| | 0 0 191 | 3.71 | 3.91 | 0.21 | 1.64 |
| | 0 0 255 | 2.23 | 3.66 | 0.31 | 1.29 |
| | 0 63 0 | 0.05 | 0.95 | 0.29 | 0.65 |
| | 0 63 63 | 1.03 | 0.89 | 0.71 | 1.14 |
| | 0 63 127 | 0.65 | 1.88 | 0.72 | 1.38 |
| | 0 63 191 | 1.28 | 2.74 | 0.50 | 1.38 |
| | 0 63 255 | 0.82 | 2.21 | 0.81 | 1.16 |
| | 0 127 0 | 1.90 | 1.05 | 0.69 | 0.96 |
| | 0 127 63 | 0.63 | 1.13 | 0.62 | 0.91 |
| | 0 127 127 | 0.39 | 0.34 | 0.99 | 1.03 |
| | 0 127 191 | 0.73 | 0.80 | 0.89 | 1.04 |
| | 0 127 255 | 2.45 | 0.70 | 1.25 | 1.42 |
| | 0 191 0 | 1.86 | 0.95 | 0.19 | 0.55 |
| | 0 191 63 | 0.29 | 1.45 | 0.31 | 0.72 |
| | 0 191 127 | 0.82 | 1.19 | 0.50 | 0.83 |
| | 0 191 191 | 0.84 | 0.69 | 0.74 | 0.91 |
| | 0 191 255 | 1.66 | 0.52 | 0.84 | 1.05 |
| | 0 255 0 | 0.95 | 0.74 | 0.63 | 0.70 |
| | 0 255 63 | 1.67 | 0.62 | 0.58 | 0.69 |
| | 0 255 127 | 2.51 | 1.17 | 0.37 | 0.79 |
| | 0 255 191 | 3.29 | 1.48 | 0.42 | 1.18 |
| | 0 255 255 | 2.71 | 1.30 | 0.29 | 1.15 |
| | 63 0 0 | 1.76 | 0.95 | 0.07 | 0.95 |
| | 63 0 63 | 0.14 | 0.10 | 0.42 | 0.43 |
| | 63 0 127 | 2.51 | 1.52 | 0.26 | 0.96 |
| | 63 0 191 | 3.11 | 3.29 | 0.05 | 1.40 |
| | 63 0 255 | 1.68 | 3.46 | 0.10 | 1.20 |
| | 63 63 0 | 0.50 | 0.85 | 1.06 | 1.22 |
| | 63 63 63 | 0.14 | 0.06 | 1.13 | 1.14 |
| | 63 63 127 | 0.53 | 1.01 | 0.90 | 1.11 |
| | 63 63 191 | 1.01 | 2.41 | 0.75 | 1.36 |
| | 63 63 255 | 1.13 | 2.34 | 1.01 | 1.35 |
| | 63 127 0 | 1.16 | 0.77 | 0.92 | 1.04 |
| | 63 127 63 | 0.01 | 0.63 | 1.06 | 1.12 |
| | 63 127 127 | 0.55 | 0.27 | 1.27 | 1.32 |
| | 63 127 191 | 1.02 | 1.40 | 1.23 | 1.56 |
| | 63 127 255 | 2.69 | 0.81 | 1.42 | 1.60 |
| | 63 191 0 | 1.37 | 0.34 | 0.58 | 0.65 |
| | 63 191 63 | 0.53 | 0.42 | 0.63 | 0.67 |
| | 63 191 127 | 1.33 | 0.68 | 0.83 | 0.99 |
| | 63 191 191 | 1.56 | 0.72 | 0.95 | 1.22 |
| | 63 191 255 | 2.02 | 0.17 | 1.09 | 1.29 |
| | 63 255 0 | 0.59 | 1.49 | 0.30 | 0.63 |
| | 63 255 63 | 1.77 | 0.09 | 0.29 | 0.42 |

Colorimetric Report

Page (3/4)



CCalc 2.3
 Copyright © 2016, Denis Freund
 All Rights Reserved
 lic. for PRAD ProAdviser

| | |
|------------------|---------------------------------------|
| Date | Saturday, December 10, 2016 |
| Tester | |
| Display | Iiyama X2888HS |
| Sensor | X-Rite i1 Pro |
| Testchart | In accordance with ISO 12646:2007 (1) |
| Target | sRGB |
| Display Profile | Not considered |
| Rendering Intent | - |

(1) Five equally spaced code values for each channel

| | RGB | Delta C | Delta H | Delta L | Delta E94 |
|--|-------------|---------|---------|---------|-----------|
| | 63 255 127 | 3.61 | 0.76 | 0.36 | 0.88 |
| | 63 255 191 | 3.80 | 1.10 | 0.23 | 1.16 |
| | 63 255 255 | 2.81 | 0.71 | 0.05 | 1.00 |
| | 127 0 0 | 2.18 | 1.05 | 0.03 | 0.80 |
| | 127 0 63 | 0.24 | 1.62 | 0.01 | 0.92 |
| | 127 0 127 | 1.84 | 0.16 | 0.25 | 0.52 |
| | 127 0 191 | 2.78 | 1.58 | 0.03 | 0.83 |
| | 127 0 255 | 0.85 | 2.38 | 0.12 | 0.85 |
| | 127 63 0 | 2.20 | 1.50 | 0.59 | 1.23 |
| | 127 63 63 | 1.80 | 0.02 | 0.75 | 1.07 |
| | 127 63 127 | 0.10 | 0.44 | 0.79 | 0.83 |
| | 127 63 191 | 0.40 | 0.91 | 0.84 | 0.94 |
| | 127 63 255 | 1.83 | 1.45 | 1.06 | 1.24 |
| | 127 127 0 | 0.58 | 1.63 | 1.09 | 1.41 |
| | 127 127 63 | 0.32 | 1.34 | 1.11 | 1.42 |
| | 127 127 127 | 0.15 | 0.08 | 1.33 | 1.34 |
| | 127 127 191 | 0.91 | 0.86 | 1.49 | 1.62 |
| | 127 127 255 | 2.81 | 0.98 | 1.65 | 1.84 |
| | 127 191 0 | 1.58 | 0.09 | 0.87 | 0.94 |
| | 127 191 63 | 0.27 | 0.71 | 0.94 | 1.00 |
| | 127 191 127 | 1.49 | 0.39 | 0.94 | 1.10 |
| | 127 191 191 | 1.63 | 0.64 | 1.07 | 1.44 |
| | 127 191 255 | 2.21 | 0.56 | 1.33 | 1.60 |
| | 127 255 0 | 0.18 | 2.41 | 0.17 | 0.93 |
| | 127 255 63 | 2.55 | 1.25 | 0.16 | 0.70 |
| | 127 255 127 | 4.00 | 0.44 | 0.04 | 0.91 |
| | 127 255 191 | 4.52 | 0.13 | 0.03 | 1.33 |
| | 127 255 255 | 3.47 | 0.57 | 0.20 | 1.36 |
| | 191 0 0 | 2.88 | 0.79 | 0.84 | 1.09 |
| | 191 0 63 | 1.84 | 2.37 | 0.74 | 1.44 |
| | 191 0 127 | 0.66 | 2.45 | 0.53 | 1.30 |
| | 191 0 191 | 2.18 | 1.07 | 0.60 | 0.86 |
| | 191 0 255 | 0.87 | 0.78 | 0.37 | 0.49 |
| | 191 63 0 | 3.72 | 2.16 | 0.12 | 1.33 |
| | 191 63 63 | 3.85 | 0.38 | 0.22 | 1.10 |
| | 191 63 127 | 1.43 | 1.89 | 0.28 | 1.13 |
| | 191 63 191 | 0.35 | 0.73 | 0.43 | 0.55 |
| | 191 63 255 | 1.87 | 0.34 | 0.79 | 0.87 |
| | 191 127 0 | 0.91 | 4.10 | 0.91 | 2.25 |
| | 191 127 63 | 2.38 | 2.92 | 0.93 | 2.08 |
| | 191 127 127 | 2.78 | 0.41 | 1.19 | 1.76 |
| | 191 127 191 | 1.72 | 0.78 | 1.19 | 1.42 |
| | 191 127 255 | 3.13 | 0.26 | 1.31 | 1.50 |
| | 191 191 0 | 1.82 | 1.50 | 0.84 | 1.16 |
| | 191 191 63 | 0.39 | 1.65 | 0.95 | 1.28 |
| | 191 191 127 | 1.03 | 1.22 | 1.03 | 1.37 |
| | 191 191 191 | 0.23 | 0.09 | 1.17 | 1.19 |

Colorimetric Report

Page (4/4)



CCalc 2.3
 Copyright © 2016, Denis Freund
 All Rights Reserved
 lic. for PRAD ProAdviser

| | |
|------------------|---------------------------------------|
| Date | Saturday, December 10, 2016 |
| Tester | |
| Display | Iiyama X2888HS |
| Sensor | X-Rite i1 Pro |
| Testchart | In accordance with ISO 12646:2007 (1) |
| Target | sRGB |
| Display Profile | Not considered |
| Rendering Intent | - |

(1) Five equally spaced code values for each channel

| | RGB | Delta C | Delta H | Delta L | Delta E94 |
|--|-----------------|---------|---------|---------|-----------|
| | 191 191 255 | 1.96 | 0.31 | 1.30 | 1.52 |
| | 191 255 0 | 1.20 | 1.42 | 0.07 | 0.61 |
| | 191 255 63 | 1.57 | 0.72 | 0.03 | 0.43 |
| | 191 255 127 | 3.32 | 0.50 | 0.02 | 0.86 |
| | 191 255 191 | 3.40 | 0.40 | 0.05 | 1.24 |
| | 191 255 255 | 2.64 | 0.67 | 0.25 | 1.48 |
| | 255 0 0 | 3.01 | 0.32 | 1.71 | 1.79 |
| | 255 0 63 | 3.57 | 2.51 | 1.65 | 2.08 |
| | 255 0 127 | 1.39 | 4.47 | 1.50 | 2.49 |
| | 255 0 191 | 0.91 | 3.56 | 1.49 | 2.10 |
| | 255 0 255 | 0.23 | 1.36 | 0.94 | 1.07 |
| | 255 63 0 | 4.23 | 2.55 | 0.79 | 1.52 |
| | 255 63 63 | 5.61 | 0.41 | 0.73 | 1.39 |
| | 255 63 127 | 3.83 | 2.88 | 0.62 | 1.73 |
| | 255 63 191 | 1.60 | 2.76 | 0.57 | 1.39 |
| | 255 63 255 | 2.15 | 1.24 | 0.23 | 0.65 |
| | 255 127 0 | 3.59 | 5.37 | 0.07 | 2.46 |
| | 255 127 63 | 5.62 | 3.27 | 0.18 | 2.08 |
| | 255 127 127 | 5.35 | 0.06 | 0.27 | 1.59 |
| | 255 127 191 | 3.98 | 2.15 | 0.44 | 1.67 |
| | 255 127 255 | 4.07 | 1.34 | 0.59 | 1.24 |
| | 255 191 0 | 0.00 | 5.15 | 0.42 | 2.32 |
| | 255 191 63 | 2.39 | 4.37 | 0.42 | 2.24 |
| | 255 191 127 | 3.87 | 2.51 | 0.39 | 2.03 |
| | 255 191 191 | 3.40 | 0.14 | 0.61 | 1.73 |
| | 255 191 255 | 3.56 | 1.09 | 0.79 | 1.64 |
| | 255 255 0 | 1.76 | 1.21 | 0.18 | 0.62 |
| | 255 255 63 | 1.17 | 1.37 | 0.17 | 0.66 |
| | 255 255 127 | 2.80 | 1.00 | 0.23 | 0.92 |
| | 255 255 191 | 2.35 | 0.44 | 0.08 | 1.01 |
| | 255 255 255 (1) | - | - | - | - |
| | Average (2) | 1.90 | 1.35 | 0.64 | 1.22 |
| | Maximum (2) | 5.62 | 5.37 | 1.71 | 2.49 |

(1) Visual adaptation to display whitepoint is assumed; CIELAB reference values are adapted (Bradford transformation) to display whitepoint
 (2) Without Black

| | |
|-------------|-------------------------|
| Color Space | Gamut Volume CIELAB D50 |
| sRGB | 94% |