

Colorimetric Report

Page (1/5)



CCalc 2.2
 Copyright © 2015, Denis Freund
 All Rights Reserved
 lic. for PRAD ProAdviser

| | |
|------------------|---|
| Date | Thursday, February 22, 2018 |
| Tester | Manuel Findeis |
| Display | Eizo EV2785 |
| Sensor | X-Rite i1 Display Pro (Corr.: WLED, XR) |
| Testchart | In accordance with ISO 12646:2007 (1) |
| Target | sRGB |
| Display Profile | Not considered |
| Rendering Intent | - |

(1) Five equally spaced code values for each channel

| | |
|-------------------------------------|--------------------------|
| White Point (CCT) | 6383 Kelvin |
| White Point XYZ (normalized) | 93.99 100.00 105.08 |
| DeltaE to D50/ D65 | 17.31/ 3.00 |
| Assumed Target Whitepoint (2) | 6400 Kelvin |
| DeltaE to Assumed Target Whitepoint | 2.30 |
| Brightness | 318.02 cd/m ² |
| Black Point | 0.29 cd/m ² |
| Contrast (x:1) | 1097:1 |
| Gradation (Average) | 2.32 |

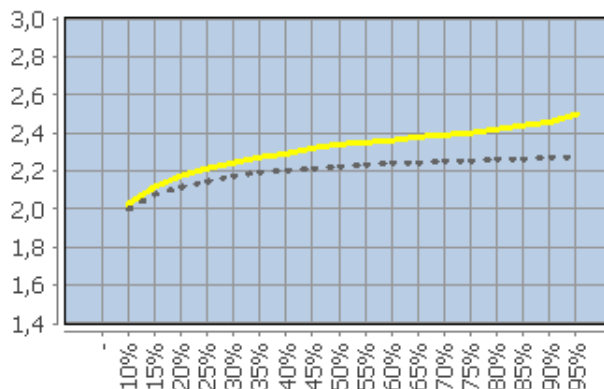
(2) Daylight

| | Percent | Kelvin | Delta C | Delta E | Gamma |
|--|-------------|--------|---------|---------|-------|
| | 5 | - | - | - | - |
| | 10 | 6789 | 1.12 | 1.21 | 2.03 |
| | 15 | 6628 | 0.90 | 1.21 | 2.11 |
| | 20 | 6575 | 0.79 | 1.32 | 2.17 |
| | 25 | 6557 | 0.88 | 1.50 | 2.21 |
| | 30 | 6486 | 0.95 | 1.69 | 2.24 |
| | 35 | 6461 | 0.91 | 1.77 | 2.27 |
| | 40 | 6464 | 0.73 | 1.79 | 2.29 |
| | 45 | 6444 | 0.87 | 1.93 | 2.32 |
| | 50 | 6436 | 0.78 | 1.92 | 2.34 |
| | 55 | 6426 | 0.76 | 1.92 | 2.35 |
| | 60 | 6431 | 0.61 | 1.77 | 2.36 |
| | 65 | 6425 | 0.53 | 1.64 | 2.38 |
| | 70 | 6422 | 0.55 | 1.51 | 2.39 |
| | 75 | 6419 | 0.42 | 1.36 | 2.40 |
| | 80 | 6418 | 0.36 | 1.18 | 2.42 |
| | 85 | 6417 | 0.30 | 0.99 | 2.44 |
| | 90 | 6412 | 0.23 | 0.75 | 2.46 |
| | 95 | 6403 | 0.17 | 0.48 | 2.50 |
| | 100 (3) | 6383 | - | - | - |
| | Average (4) | - | 0.63 | 1.45 | 2.32 |
| | Maximum (4) | - | 0.95 | 1.93 | - |
| | Range (4) | - | 0.95 | - | - |

(3) Visual adaptation to display whitepoint is assumed

(4) Only luminance > 1% considered

Corresponding Gamma



Colorimetric Report

Page (2/5)



CCalc 2.2
 Copyright © 2015, Denis Freund
 All Rights Reserved
 lic. for PRAD ProAdviser

| | |
|------------------|---|
| Date | Thursday, February 22, 2018 |
| Tester | Manuel Findeis |
| Display | Eizo EV2785 |
| Sensor | X-Rite i1 Display Pro (Corr.: WLED, XR) |
| Testchart | In accordance with ISO 12646:2007 (1) |
| Target | sRGB |
| Display Profile | Not considered |
| Rendering Intent | - |

(1) Five equally spaced code values for each channel

| | RGB | Delta C | Delta H | Delta L | Delta E94 |
|--|------------|---------|---------|---------|-----------|
| | 0 0 0 | 1.10 | 0.00 | 0.81 | 1.37 |
| | 0 0 63 | 1.46 | 0.16 | 0.87 | 1.01 |
| | 0 0 127 | 2.65 | 1.26 | 0.85 | 1.17 |
| | 0 0 191 | 1.11 | 1.05 | 1.10 | 1.19 |
| | 0 0 255 | 1.12 | 0.85 | 1.58 | 1.62 |
| | 0 63 0 | 0.64 | 0.08 | 1.24 | 1.26 |
| | 0 63 63 | 0.56 | 0.91 | 1.16 | 1.40 |
| | 0 63 127 | 1.22 | 1.26 | 0.91 | 1.26 |
| | 0 63 191 | 2.11 | 0.74 | 0.26 | 0.63 |
| | 0 63 255 | 3.80 | 0.70 | 0.49 | 0.83 |
| | 0 127 0 | 4.84 | 3.55 | 2.02 | 2.89 |
| | 0 127 63 | 0.96 | 0.93 | 1.95 | 2.04 |
| | 0 127 127 | 0.36 | 1.20 | 1.83 | 2.01 |
| | 0 127 191 | 2.47 | 2.58 | 1.40 | 2.28 |
| | 0 127 255 | 5.68 | 2.98 | 0.79 | 2.08 |
| | 0 191 0 | 9.14 | 5.64 | 1.69 | 3.34 |
| | 0 191 63 | 5.66 | 3.16 | 1.66 | 2.48 |
| | 0 191 127 | 2.26 | 1.18 | 1.59 | 1.81 |
| | 0 191 191 | 0.54 | 0.94 | 1.41 | 1.54 |
| | 0 191 255 | 2.82 | 3.64 | 1.05 | 2.56 |
| | 0 255 0 | 14.06 | 7.02 | 0.56 | 3.39 |
| | 0 255 63 | 11.19 | 5.36 | 0.58 | 2.81 |
| | 0 255 127 | 7.34 | 3.24 | 0.56 | 2.08 |
| | 0 255 191 | 4.10 | 1.70 | 0.44 | 1.40 |
| | 0 255 255 | 1.46 | 0.63 | 0.30 | 0.65 |
| | 63 0 0 | 2.54 | 0.62 | 0.04 | 1.10 |
| | 63 0 63 | 1.88 | 1.06 | 0.03 | 0.91 |
| | 63 0 127 | 1.72 | 1.34 | 0.22 | 0.78 |
| | 63 0 191 | 0.72 | 1.39 | 0.68 | 0.88 |
| | 63 0 255 | 1.45 | 1.16 | 1.28 | 1.36 |
| | 63 63 0 | 0.03 | 0.13 | 1.42 | 1.42 |
| | 63 63 63 | 0.93 | 0.11 | 1.20 | 1.52 |
| | 63 63 127 | 1.40 | 0.11 | 0.99 | 1.11 |
| | 63 63 191 | 2.27 | 0.01 | 0.33 | 0.60 |
| | 63 63 255 | 4.10 | 0.19 | 0.35 | 0.77 |
| | 63 127 0 | 5.18 | 3.07 | 2.14 | 2.96 |
| | 63 127 63 | 1.31 | 0.70 | 1.96 | 2.05 |
| | 63 127 127 | 0.02 | 1.06 | 1.85 | 2.01 |
| | 63 127 191 | 2.83 | 1.87 | 1.42 | 2.11 |
| | 63 127 255 | 5.77 | 2.27 | 0.88 | 1.93 |
| | 63 191 0 | 9.42 | 5.02 | 1.82 | 3.33 |
| | 63 191 63 | 5.80 | 2.89 | 1.71 | 2.50 |
| | 63 191 127 | 2.43 | 1.03 | 1.66 | 1.89 |
| | 63 191 191 | 0.53 | 1.04 | 1.44 | 1.61 |
| | 63 191 255 | 3.16 | 3.28 | 1.11 | 2.51 |
| | 63 255 0 | 14.10 | 6.57 | 0.73 | 3.36 |
| | 63 255 63 | 11.30 | 4.96 | 0.65 | 2.78 |

Colorimetric Report

Page (3/5)



CCalc 2.2
 Copyright © 2015, Denis Freund
 All Rights Reserved
 lic. for PRAD ProAdviser

| | |
|------------------|---|
| Date | Thursday, February 22, 2018 |
| Tester | Manuel Findeis |
| Display | Eizo EV2785 |
| Sensor | X-Rite i1 Display Pro (Corr.: WLED, XR) |
| Testchart | In accordance with ISO 12646:2007 (1) |
| Target | sRGB |
| Display Profile | Not considered |
| Rendering Intent | - |

(1) Five equally spaced code values for each channel

| | RGB | Delta C | Delta H | Delta L | Delta E94 |
|--|-------------|---------|---------|---------|-----------|
| | 63 255 127 | 7.49 | 2.85 | 0.65 | 2.07 |
| | 63 255 191 | 4.10 | 1.40 | 0.54 | 1.39 |
| | 63 255 255 | 1.69 | 0.65 | 0.39 | 0.77 |
| | 127 0 0 | 1.42 | 0.72 | 0.47 | 0.71 |
| | 127 0 63 | 1.78 | 0.08 | 0.49 | 0.73 |
| | 127 0 127 | 1.42 | 1.30 | 0.34 | 0.81 |
| | 127 0 191 | 0.20 | 1.80 | 0.14 | 0.75 |
| | 127 0 255 | 1.98 | 1.78 | 0.75 | 1.01 |
| | 127 63 0 | 2.10 | 1.27 | 1.32 | 1.63 |
| | 127 63 63 | 0.10 | 0.02 | 1.26 | 1.26 |
| | 127 63 127 | 0.51 | 0.76 | 1.02 | 1.13 |
| | 127 63 191 | 1.66 | 1.12 | 0.61 | 0.88 |
| | 127 63 255 | 3.87 | 0.92 | 0.07 | 0.75 |
| | 127 127 0 | 6.60 | 1.38 | 2.04 | 2.84 |
| | 127 127 63 | 1.87 | 0.42 | 1.97 | 2.12 |
| | 127 127 127 | 0.90 | 0.13 | 1.77 | 1.99 |
| | 127 127 191 | 3.14 | 0.17 | 1.50 | 1.91 |
| | 127 127 255 | 5.72 | 0.62 | 0.92 | 1.66 |
| | 127 191 0 | 10.25 | 3.71 | 1.81 | 3.27 |
| | 127 191 63 | 6.24 | 1.97 | 1.80 | 2.55 |
| | 127 191 127 | 2.38 | 0.51 | 1.68 | 1.90 |
| | 127 191 191 | 0.66 | 1.05 | 1.54 | 1.77 |
| | 127 191 255 | 3.95 | 2.10 | 1.16 | 2.29 |
| | 127 255 0 | 14.76 | 5.24 | 0.78 | 3.28 |
| | 127 255 63 | 11.76 | 3.83 | 0.80 | 2.75 |
| | 127 255 127 | 7.60 | 2.02 | 0.73 | 2.05 |
| | 127 255 191 | 4.23 | 0.88 | 0.66 | 1.48 |
| | 127 255 255 | 1.90 | 0.71 | 0.45 | 0.96 |
| | 191 0 0 | 1.81 | 3.78 | 0.26 | 1.73 |
| | 191 0 63 | 0.66 | 2.02 | 0.28 | 1.04 |
| | 191 0 127 | 1.46 | 0.21 | 0.20 | 0.41 |
| | 191 0 191 | 0.57 | 1.35 | 0.08 | 0.58 |
| | 191 0 255 | 1.57 | 2.14 | 0.57 | 0.99 |
| | 191 63 0 | 4.53 | 3.43 | 0.94 | 2.14 |
| | 191 63 63 | 1.20 | 1.40 | 0.80 | 1.14 |
| | 191 63 127 | 0.00 | 0.06 | 0.74 | 0.74 |
| | 191 63 191 | 1.02 | 1.18 | 0.42 | 0.72 |
| | 191 63 255 | 3.10 | 1.77 | 0.02 | 0.87 |
| | 191 127 0 | 8.21 | 0.96 | 1.72 | 2.72 |
| | 191 127 63 | 3.54 | 0.44 | 1.60 | 1.97 |
| | 191 127 127 | 1.12 | 0.12 | 1.52 | 1.61 |
| | 191 127 191 | 2.28 | 0.80 | 1.24 | 1.55 |
| | 191 127 255 | 4.94 | 0.81 | 0.86 | 1.49 |
| | 191 191 0 | 11.26 | 1.92 | 1.73 | 3.16 |
| | 191 191 63 | 6.96 | 1.05 | 1.61 | 2.48 |
| | 191 191 127 | 2.48 | 0.20 | 1.59 | 1.87 |
| | 191 191 191 | 0.80 | 0.15 | 1.36 | 1.59 |

Colorimetric Report

Page (4/5)



CCalc 2.2
 Copyright © 2015, Denis Freund
 All Rights Reserved
 lic. for PRAD ProAdviser

| | |
|------------------|---|
| Date | Thursday, February 22, 2018 |
| Tester | Manuel Findeis |
| Display | Eizo EV2785 |
| Sensor | X-Rite i1 Display Pro (Corr.: WLED, XR) |
| Testchart | In accordance with ISO 12646:2007 (1) |
| Target | sRGB |
| Display Profile | Not considered |
| Rendering Intent | - |

(1) Five equally spaced code values for each channel

| | RGB | Delta C | Delta H | Delta L | Delta E94 |
|--|-----------------|---------|---------|---------|-----------|
| | 191 191 255 | 4.20 | 0.21 | 1.11 | 2.00 |
| | 191 255 0 | 15.28 | 3.55 | 0.84 | 3.21 |
| | 191 255 63 | 12.08 | 2.57 | 0.77 | 2.72 |
| | 191 255 127 | 7.54 | 1.08 | 0.78 | 2.09 |
| | 191 255 191 | 3.89 | 0.25 | 0.64 | 1.54 |
| | 191 255 255 | 1.53 | 0.73 | 0.51 | 1.09 |
| | 255 0 0 | 5.31 | 6.07 | 0.62 | 2.62 |
| | 255 0 63 | 1.80 | 3.97 | 0.56 | 1.81 |
| | 255 0 127 | 0.20 | 2.38 | 0.56 | 1.19 |
| | 255 0 191 | 0.52 | 0.41 | 0.74 | 0.77 |
| | 255 0 255 | 1.08 | 1.27 | 1.02 | 1.14 |
| | 255 63 0 | 7.01 | 5.22 | 0.05 | 2.48 |
| | 255 63 63 | 3.39 | 3.15 | 0.09 | 1.56 |
| | 255 63 127 | 1.05 | 1.88 | 0.16 | 0.93 |
| | 255 63 191 | 0.71 | 0.15 | 0.27 | 0.31 |
| | 255 63 255 | 2.34 | 1.30 | 0.60 | 0.88 |
| | 255 127 0 | 10.23 | 2.88 | 0.81 | 2.58 |
| | 255 127 63 | 5.92 | 1.70 | 0.81 | 1.82 |
| | 255 127 127 | 3.05 | 0.88 | 0.67 | 1.22 |
| | 255 127 191 | 2.30 | 0.03 | 0.55 | 0.85 |
| | 255 127 255 | 4.07 | 0.94 | 0.22 | 1.03 |
| | 255 191 0 | 12.96 | 0.11 | 1.08 | 2.93 |
| | 255 191 63 | 8.87 | 0.05 | 1.08 | 2.38 |
| | 255 191 127 | 4.24 | 0.16 | 0.99 | 1.74 |
| | 255 191 191 | 1.88 | 0.07 | 0.89 | 1.26 |
| | 255 191 255 | 3.65 | 0.61 | 0.62 | 1.49 |
| | 255 255 0 | 16.01 | 2.08 | 0.51 | 3.15 |
| | 255 255 63 | 12.64 | 1.53 | 0.52 | 2.71 |
| | 255 255 127 | 7.56 | 0.62 | 0.46 | 2.06 |
| | 255 255 191 | 3.43 | 0.07 | 0.42 | 1.46 |
| | 255 255 255 (1) | - | - | - | - |
| | Average (2) | 4.03 | 1.61 | 0.93 | 1.72 |
| | Maximum (2) | 16.01 | 7.02 | 2.14 | 3.39 |

(1) Visual adaptation to display whitepoint is assumed; CIELAB reference values are adapted (Bradford transformation) to display whitepoint
 (2) Without Black

| | |
|-------------|-------------------------|
| Color Space | Gamut Volume CIELAB D50 |
| sRGB | 99% |

Colorimetric Report

Page (5/5)



CCalc 2.2
 Copyright © 2015, Denis Freund
 All Rights Reserved
 lic. for PRAD ProAdviser

| | |
|------------------|---|
| Date | Thursday, February 22, 2018 |
| Tester | Manuel Findeis |
| Display | Eizo EV2785 |
| Sensor | X-Rite i1 Display Pro (Corr.: WLED, XR) |
| Testchart | In accordance with ISO 12646:2007 (1) |
| Target | sRGB |
| Display Profile | Not considered |
| Rendering Intent | - |

(1) Five equally spaced code values for each channel

| Property | Device adjustments |
|----------------------|--------------------|
| Backlight brightness | |
| Brightness | |
| Contrast | |
| RGB Gain | |
| Gradation | |
| Other | sRGB-Modus |