

Colorimetric Report

Page (1/5)



CCalc 2.4
 Copyright © 2018, Denis Freund
 All Rights Reserved
 lic. for PRAD ProAdviser

| | |
|------------------|---|
| Date | Wednesday, January 23, 2019 |
| Tester | Manuel Findeis |
| Display | LG 24CK550W-3A |
| Sensor | X-Rite i1 Display Pro (Corr.: GB-r-LED, XR) |
| Testchart | In accordance with ISO 12646:2007 (1) |
| Target | AdobeRGB |
| Display Profile | Not considered |
| Rendering Intent | - |

(1) Five equally spaced code values for each channel

| | |
|-------------------------------------|--------------------------|
| White Point (CCT) | 6550 Kelvin |
| White Point XYZ (normalized) | 95.70 100.00 110.78 |
| DeltaE to D50/ D65 | 20.67/ 1.62 |
| Assumed Target Whitepoint (2) | 6500 Kelvin |
| DeltaE to Assumed Target Whitepoint | 1.71 |
| Brightness | 121.93 cd/m ² |
| Black Point | 0.12 cd/m ² |
| Contrast (x:1) | 1016:1 |
| Gradation (Average) | 2.18 |

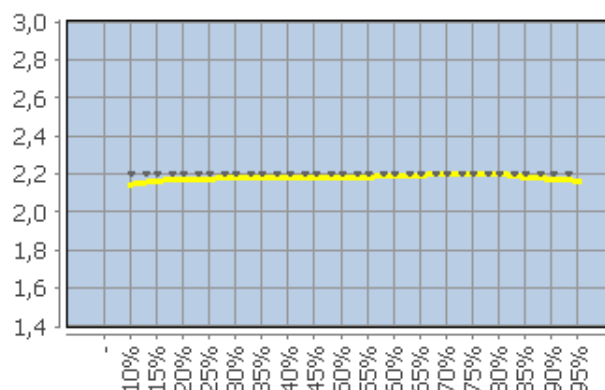
(2) Daylight

| | Percent | Kelvin | Delta C | Delta E | Gamma |
|--|-------------|--------|---------|---------|-------|
| | 5 | - | - | - | - |
| | 10 | 7157 | 1.02 | 1.35 | 2.14 |
| | 15 | 6811 | 0.63 | 0.91 | 2.16 |
| | 20 | 6686 | 0.44 | 0.77 | 2.17 |
| | 25 | 6641 | 0.26 | 0.61 | 2.17 |
| | 30 | 6612 | 0.20 | 0.48 | 2.18 |
| | 35 | 6625 | 0.31 | 0.50 | 2.18 |
| | 40 | 6644 | 0.53 | 0.65 | 2.18 |
| | 45 | 6578 | 0.35 | 0.47 | 2.18 |
| | 50 | 6515 | 0.16 | 0.36 | 2.18 |
| | 55 | 6519 | 0.15 | 0.29 | 2.18 |
| | 60 | 6502 | 0.31 | 0.34 | 2.19 |
| | 65 | 6524 | 0.15 | 0.17 | 2.19 |
| | 70 | 6498 | 0.32 | 0.32 | 2.20 |
| | 75 | 6504 | 0.30 | 0.30 | 2.20 |
| | 80 | 6506 | 0.30 | 0.30 | 2.20 |
| | 85 | 6502 | 0.33 | 0.34 | 2.18 |
| | 90 | 6523 | 0.28 | 0.30 | 2.17 |
| | 95 | 6538 | 0.35 | 0.35 | 2.16 |
| | 100 (3) | 6550 | - | - | - |
| | Average (4) | - | 0.32 | 0.44 | 2.18 |
| | Maximum (4) | - | 0.63 | 0.91 | - |
| | Range (4) | - | 0.94 | - | - |

(3) Visual adaptation to display whitepoint is assumed

(4) Only luminance > 1% considered

Corresponding Gamma



Colorimetric Report

Page (2/5)



CCalc 2.4
 Copyright © 2018, Denis Freund
 All Rights Reserved
 lic. for PRAD ProAdviser

| | |
|------------------|---|
| Date | Wednesday, January 23, 2019 |
| Tester | Manuel Findeis |
| Display | LG 24CK550W-3A |
| Sensor | X-Rite i1 Display Pro (Corr.: GB-r-LED, XR) |
| Testchart | In accordance with ISO 12646:2007 (1) |
| Target | AdobeRGB |
| Display Profile | Not considered |
| Rendering Intent | - |

(1) Five equally spaced code values for each channel

| | RGB | Delta C | Delta H | Delta L | Delta E94 |
|--|------------|---------|---------|---------|-----------|
| | 0 0 0 | 1.10 | 0.00 | 0.87 | 1.40 |
| | 0 0 63 | 0.83 | 0.82 | 0.91 | 1.08 |
| | 0 0 127 | 1.09 | 0.62 | 0.69 | 0.78 |
| | 0 0 191 | 1.25 | 0.93 | 0.55 | 0.68 |
| | 0 0 255 | 1.45 | 1.15 | 0.54 | 0.69 |
| | 0 63 0 | 3.24 | 0.11 | 0.41 | 0.99 |
| | 0 63 63 | 1.34 | 0.03 | 0.58 | 0.82 |
| | 0 63 127 | 0.73 | 1.05 | 0.53 | 0.85 |
| | 0 63 191 | 0.98 | 1.11 | 0.45 | 0.70 |
| | 0 63 255 | 0.59 | 1.84 | 0.32 | 0.75 |
| | 0 127 0 | 2.28 | 0.14 | 0.15 | 0.45 |
| | 0 127 63 | 1.36 | 0.65 | 0.31 | 0.53 |
| | 0 127 127 | 1.60 | 0.23 | 0.35 | 0.63 |
| | 0 127 191 | 1.58 | 0.53 | 0.33 | 0.67 |
| | 0 127 255 | 1.40 | 1.29 | 0.35 | 0.76 |
| | 0 191 0 | 2.36 | 0.89 | 0.10 | 0.46 |
| | 0 191 63 | 2.10 | 0.92 | 0.00 | 0.47 |
| | 0 191 127 | 2.18 | 0.82 | 0.03 | 0.55 |
| | 0 191 191 | 2.10 | 0.59 | 0.03 | 0.61 |
| | 0 191 255 | 2.07 | 0.65 | 0.05 | 0.66 |
| | 0 255 0 | 2.23 | 1.13 | 0.16 | 0.45 |
| | 0 255 63 | 2.27 | 1.36 | 0.11 | 0.51 |
| | 0 255 127 | 2.10 | 1.52 | 0.06 | 0.60 |
| | 0 255 191 | 1.63 | 1.65 | 0.04 | 0.71 |
| | 0 255 255 | 2.24 | 0.81 | 0.07 | 0.61 |
| | 63 0 0 | 1.89 | 0.48 | 0.62 | 0.99 |
| | 63 0 63 | 1.29 | 0.59 | 0.72 | 0.93 |
| | 63 0 127 | 1.69 | 0.03 | 0.66 | 0.76 |
| | 63 0 191 | 1.62 | 0.53 | 0.58 | 0.68 |
| | 63 0 255 | 0.95 | 1.15 | 0.49 | 0.64 |
| | 63 63 0 | 1.58 | 0.52 | 0.42 | 0.80 |
| | 63 63 63 | 0.28 | 0.09 | 0.56 | 0.63 |
| | 63 63 127 | 0.49 | 0.46 | 0.55 | 0.63 |
| | 63 63 191 | 0.77 | 0.93 | 0.42 | 0.62 |
| | 63 63 255 | 0.44 | 1.51 | 0.36 | 0.66 |
| | 63 127 0 | 1.51 | 0.06 | 0.24 | 0.40 |
| | 63 127 63 | 0.97 | 0.25 | 0.39 | 0.49 |
| | 63 127 127 | 1.28 | 0.03 | 0.27 | 0.57 |
| | 63 127 191 | 1.18 | 1.38 | 0.22 | 0.95 |
| | 63 127 255 | 0.66 | 1.78 | 0.29 | 0.89 |
| | 63 191 0 | 1.69 | 0.57 | 0.06 | 0.33 |
| | 63 191 63 | 1.96 | 0.71 | 0.05 | 0.44 |
| | 63 191 127 | 1.95 | 0.77 | 0.04 | 0.55 |
| | 63 191 191 | 2.44 | 0.12 | 0.02 | 0.69 |
| | 63 191 255 | 1.87 | 1.23 | 0.14 | 0.87 |
| | 63 255 0 | 2.31 | 1.25 | 0.10 | 0.48 |
| | 63 255 63 | 2.31 | 1.13 | 0.04 | 0.47 |

Colorimetric Report

Page (3/5)



CCalc 2.4
 Copyright © 2018, Denis Freund
 All Rights Reserved
 lic. for PRAD ProAdviser

| | |
|------------------|---|
| Date | Wednesday, January 23, 2019 |
| Tester | Manuel Findeis |
| Display | LG 24CK550W-3A |
| Sensor | X-Rite i1 Display Pro (Corr.: GB-r-LED, XR) |
| Testchart | In accordance with ISO 12646:2007 (1) |
| Target | AdobeRGB |
| Display Profile | Not considered |
| Rendering Intent | - |

(1) Five equally spaced code values for each channel

| | RGB | Delta C | Delta H | Delta L | Delta E94 |
|--|-------------|---------|---------|---------|-----------|
| | 63 255 127 | 2.39 | 1.13 | 0.02 | 0.54 |
| | 63 255 191 | 2.68 | 1.06 | 0.03 | 0.67 |
| | 63 255 255 | 2.68 | 0.21 | 0.15 | 0.64 |
| | 127 0 0 | 1.97 | 0.40 | 0.17 | 0.54 |
| | 127 0 63 | 1.25 | 0.34 | 0.24 | 0.46 |
| | 127 0 127 | 1.20 | 0.42 | 0.20 | 0.40 |
| | 127 0 191 | 1.39 | 0.08 | 0.24 | 0.35 |
| | 127 0 255 | 0.77 | 0.58 | 0.32 | 0.40 |
| | 127 63 0 | 1.82 | 0.19 | 0.23 | 0.55 |
| | 127 63 63 | 1.44 | 0.09 | 0.25 | 0.57 |
| | 127 63 127 | 1.07 | 0.44 | 0.27 | 0.49 |
| | 127 63 191 | 1.28 | 0.00 | 0.28 | 0.39 |
| | 127 63 255 | 0.62 | 0.85 | 0.31 | 0.46 |
| | 127 127 0 | 0.54 | 0.45 | 0.17 | 0.32 |
| | 127 127 63 | 0.20 | 0.83 | 0.27 | 0.59 |
| | 127 127 127 | 0.27 | 0.05 | 0.24 | 0.36 |
| | 127 127 191 | 0.40 | 0.53 | 0.18 | 0.41 |
| | 127 127 255 | 0.44 | 0.90 | 0.24 | 0.50 |
| | 127 191 0 | 0.85 | 0.51 | 0.05 | 0.26 |
| | 127 191 63 | 0.86 | 0.37 | 0.03 | 0.25 |
| | 127 191 127 | 1.18 | 0.45 | 0.02 | 0.43 |
| | 127 191 191 | 1.71 | 0.14 | 0.05 | 0.71 |
| | 127 191 255 | 1.12 | 1.42 | 0.14 | 0.96 |
| | 127 255 0 | 1.51 | 1.14 | 0.09 | 0.44 |
| | 127 255 63 | 1.84 | 1.08 | 0.05 | 0.47 |
| | 127 255 127 | 2.13 | 0.97 | 0.00 | 0.55 |
| | 127 255 191 | 2.04 | 0.83 | 0.08 | 0.62 |
| | 127 255 255 | 2.43 | 0.01 | 0.19 | 0.71 |
| | 191 0 0 | 2.36 | 0.01 | 0.23 | 0.51 |
| | 191 0 63 | 2.04 | 0.12 | 0.17 | 0.48 |
| | 191 0 127 | 1.74 | 0.74 | 0.11 | 0.53 |
| | 191 0 191 | 1.38 | 0.62 | 0.01 | 0.37 |
| | 191 0 255 | 0.65 | 0.05 | 0.05 | 0.12 |
| | 191 63 0 | 2.13 | 0.59 | 0.15 | 0.52 |
| | 191 63 63 | 2.33 | 0.00 | 0.12 | 0.56 |
| | 191 63 127 | 1.87 | 0.40 | 0.01 | 0.51 |
| | 191 63 191 | 1.15 | 0.40 | 0.06 | 0.31 |
| | 191 63 255 | 0.91 | 0.05 | 0.16 | 0.22 |
| | 191 127 0 | 0.89 | 1.28 | 0.02 | 0.63 |
| | 191 127 63 | 1.10 | 1.16 | 0.03 | 0.69 |
| | 191 127 127 | 1.28 | 0.27 | 0.04 | 0.53 |
| | 191 127 191 | 0.89 | 0.11 | 0.05 | 0.30 |
| | 191 127 255 | 0.68 | 0.16 | 0.14 | 0.22 |
| | 191 191 0 | 0.22 | 0.57 | 0.15 | 0.29 |
| | 191 191 63 | 0.31 | 0.46 | 0.10 | 0.25 |
| | 191 191 127 | 0.39 | 0.12 | 0.07 | 0.18 |
| | 191 191 191 | 0.29 | 0.08 | 0.02 | 0.30 |

Colorimetric Report

Page (4/5)



CCalc 2.4
 Copyright © 2018, Denis Freund
 All Rights Reserved
 lic. for PRAD ProAdviser

| | |
|------------------|---|
| Date | Wednesday, January 23, 2019 |
| Tester | Manuel Findeis |
| Display | LG 24CK550W-3A |
| Sensor | X-Rite i1 Display Pro (Corr.: GB-r-LED, XR) |
| Testchart | In accordance with ISO 12646:2007 (1) |
| Target | AdobeRGB |
| Display Profile | Not considered |
| Rendering Intent | - |

(1) Five equally spaced code values for each channel

| | RGB | Delta C | Delta H | Delta L | Delta E94 |
|--|-----------------|---------|---------|---------|-----------|
| | 191 191 255 | 0.34 | 0.54 | 0.10 | 0.39 |
| | 191 255 0 | 0.43 | 0.31 | 0.12 | 0.18 |
| | 191 255 63 | 0.68 | 0.32 | 0.08 | 0.19 |
| | 191 255 127 | 0.84 | 0.24 | 0.02 | 0.22 |
| | 191 255 191 | 0.78 | 0.53 | 0.04 | 0.40 |
| | 191 255 255 | 1.33 | 0.03 | 0.09 | 0.57 |
| | 255 0 0 | 2.34 | 0.52 | 0.34 | 0.54 |
| | 255 0 63 | 2.13 | 0.53 | 0.31 | 0.53 |
| | 255 0 127 | 1.82 | 1.05 | 0.19 | 0.59 |
| | 255 0 191 | 1.43 | 1.00 | 0.04 | 0.48 |
| | 255 0 255 | 1.53 | 0.65 | 0.11 | 0.36 |
| | 255 63 0 | 2.08 | 0.78 | 0.29 | 0.54 |
| | 255 63 63 | 1.96 | 0.81 | 0.22 | 0.54 |
| | 255 63 127 | 2.23 | 0.55 | 0.13 | 0.53 |
| | 255 63 191 | 1.80 | 0.78 | 0.03 | 0.48 |
| | 255 63 255 | 1.70 | 0.59 | 0.19 | 0.41 |
| | 255 127 0 | 1.27 | 1.84 | 0.11 | 0.78 |
| | 255 127 63 | 1.49 | 1.62 | 0.11 | 0.78 |
| | 255 127 127 | 2.02 | 0.51 | 0.06 | 0.57 |
| | 255 127 191 | 1.71 | 0.09 | 0.05 | 0.44 |
| | 255 127 255 | 1.84 | 0.38 | 0.23 | 0.48 |
| | 255 191 0 | 0.57 | 1.39 | 0.20 | 0.62 |
| | 255 191 63 | 0.77 | 1.17 | 0.19 | 0.58 |
| | 255 191 127 | 1.22 | 0.72 | 0.12 | 0.56 |
| | 255 191 191 | 1.02 | 0.22 | 0.01 | 0.44 |
| | 255 191 255 | 0.99 | 0.21 | 0.15 | 0.38 |
| | 255 255 0 | 0.36 | 0.73 | 0.26 | 0.38 |
| | 255 255 63 | 0.79 | 0.67 | 0.22 | 0.38 |
| | 255 255 127 | 1.02 | 0.60 | 0.16 | 0.43 |
| | 255 255 191 | 0.54 | 0.37 | 0.09 | 0.34 |
| | 255 255 255 (1) | - | - | - | - |
| | Average (2) | 1.40 | 0.64 | 0.21 | 0.54 |
| | Maximum (2) | 3.24 | 1.84 | 0.91 | 1.08 |

(1) Visual adaptation to display whitepoint is assumed; CIELAB reference values are adapted (Bradford transformation) to display whitepoint
 (2) Without Black

| | |
|-------------|-------------------------|
| Color Space | Gamut Volume CIELAB D50 |
| AdobeRGB | 95% |

Colorimetric Report

Page (5/5)



CCalc 2.4
Copyright © 2018, Denis Freund
All Rights Reserved
lic. for PRAD ProAdviser

| | |
|------------------|---|
| Date | Wednesday, January 23, 2019 |
| Tester | Manuel Findeis |
| Display | LG 24CK550W-3A |
| Sensor | X-Rite i1 Display Pro (Corr.: GB-r-LED, XR) |
| Testchart | In accordance with ISO 12646:2007 (1) |
| Target | AdobeRGB |
| Display Profile | Not considered |
| Rendering Intent | - |

(1) Five equally spaced code values for each channel

| Property | Device adjustments |
|----------------------|--------------------|
| Backlight brightness | |
| Brightness | |
| Contrast | |
| RGB Gain | |
| Gradation | |
| Other | |