

# Colorimetric Report

## Page (1/4)



CCalc 2.4  
 Copyright © 2018, Denis Freund  
 All Rights Reserved  
 lic. for PRAD ProAdviser

Date	Tuesday, November 5, 2019
Tester	Denis Freund
Display	ViewSonic VP3481
Sensor	X-Rite i1 Pro
Testchart	In accordance with ISO 12646:2007 (1)
Target	AdobeRGB
Display Profile	Considered
Rendering Intent	Relative colorimetric

(1) Five equally spaced code values for each channel

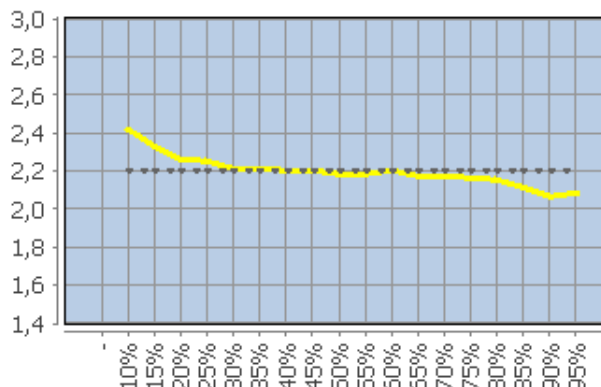
White Point (CCT)	6514 Kelvin
White Point XYZ (normalized)	95.55 100.00 109.96
DeltaE to D50/ D65	20.14/ 1.10
Assumed Target Whitepoint (2)	6500 Kelvin
DeltaE to Assumed Target Whitepoint	1.19
Brightness	137.13 cd/m <sup>2</sup>
Black Point	0.08 cd/m <sup>2</sup>
Contrast (x:1)	1714:1
Gradation (Average)	2.20

(2) Daylight

	Percent	Kelvin	Delta C	Delta E	Gamma
	5	-	-	-	-
	10	6691	0.18	2.33	2.42
	15	6281	0.47	2.27	2.33
	20	6342	0.67	1.40	2.26
	25	6328	0.58	1.14	2.25
	30	6477	0.14	0.23	2.21
	35	6492	0.25	0.33	2.21
	40	6518	0.84	0.85	2.20
	45	6508	0.28	0.28	2.20
	50	6478	0.34	0.44	2.18
	55	6505	0.12	0.30	2.18
	60	6526	0.50	0.50	2.20
	65	6469	0.61	0.68	2.17
	70	6477	0.22	0.42	2.17
	75	6475	0.30	0.48	2.16
	80	6491	0.52	0.64	2.15
	85	6506	0.85	0.98	2.11
	90	6506	0.65	0.82	2.07
	95	6526	0.16	0.28	2.08
	100 (3)	6513	-	-	-
	Average (4)	-	0.44	0.71	2.2
	Maximum (4)	-	0.85	2.27	-
	Range (4)	-	1.69	-	-

(3) Visual adaptation to display whitepoint is assumed  
 (4) Only luminance > 1% considered

### Corresponding Gamma



# Colorimetric Report

## Page (2/4)



CCalc 2.4  
 Copyright © 2018, Denis Freund  
 All Rights Reserved  
 lic. for PRAD ProAdviser

Date	Tuesday, November 5, 2019
Tester	Denis Freund
Display	ViewSonic VP3481
Sensor	X-Rite i1 Display Pro (Corr.: WLED, XR)
Testchart	In accordance with ISO 12646:2007 (1)
Target	AdobeRGB
Display Profile	Considered
Rendering Intent	Relative colorimetric

(1) Five equally spaced code values for each channel

	RGB	Delta C	Delta H	Delta L	Delta E94
	0 0 0	0.45	0.00	0.55	0.71
	0 0 63	4.66	0.25	0.31	1.63
	0 0 127	0.38	1.89	0.51	0.99
	0 0 191	0.34	2.10	0.16	0.81
	0 0 255	2.26	0.44	1.00	1.06
	0 63 0	15.66	7.83	0.63	6.10
	0 63 63	10.32	0.90	0.17	4.52
	0 63 127	0.91	6.73	0.60	4.03
	0 63 191	1.76	4.69	0.19	2.12
	0 63 255	0.77	2.33	0.93	1.27
	0 127 0	21.13	15.31	1.11	7.36
	0 127 63	18.43	12.92	1.62	7.40
	0 127 127	16.19	1.47	1.54	5.38
	0 127 191	5.04	9.49	1.52	5.89
	0 127 255	1.71	6.65	1.70	3.55
	0 191 0	26.54	22.49	2.46	8.74
	0 191 63	24.32	21.74	2.77	9.12
	0 191 127	24.78	11.62	2.74	7.47
	0 191 191	21.53	1.19	2.69	6.12
	0 191 255	11.88	9.79	2.95	6.77
	0 255 0	32.36	30.97	2.92	10.13
	0 255 63	30.43	30.83	3.02	10.49
	0 255 127	33.26	21.55	2.98	9.27
	0 255 191	32.50	10.53	2.95	7.70
	0 255 255	27.70	1.97	3.10	6.79
	63 0 0	1.22	2.75	1.20	2.18
	63 0 63	0.30	1.47	1.25	1.55
	63 0 127	2.20	1.26	1.13	1.37
	63 0 191	2.35	1.39	0.84	1.08
	63 0 255	0.52	0.46	0.35	0.39
	63 63 0	3.83	0.96	1.51	2.18
	63 63 63	0.59	0.09	1.01	1.17
	63 63 127	1.72	1.08	0.97	1.30
	63 63 191	1.64	1.08	0.71	0.93
	63 63 255	0.33	0.56	0.30	0.37
	63 127 0	3.29	0.61	0.45	0.88
	63 127 63	0.10	1.84	0.08	0.97
	63 127 127	1.43	0.26	0.08	0.59
	63 127 191	0.71	0.92	0.19	0.63
	63 127 255	0.53	0.46	0.59	0.64
	63 191 0	15.13	12.99	1.37	5.32
	63 191 63	12.84	13.57	1.69	5.88
	63 191 127	14.40	7.50	1.66	4.93
	63 191 191	13.02	0.63	1.68	4.04
	63 191 255	6.81	6.30	2.04	4.46
	63 255 0	24.36	24.31	2.19	8.14
	63 255 63	22.80	24.60	2.30	8.57

# Colorimetric Report

## Page (3/4)



CCalc 2.4  
 Copyright © 2018, Denis Freund  
 All Rights Reserved  
 lic. for PRAD ProAdviser

Date	Tuesday, November 5, 2019
Tester	Denis Freund
Display	ViewSonic VP3481
Sensor	X-Rite i1 Display Pro (Corr.: WLED, XR)
Testchart	In accordance with ISO 12646:2007 (1)
Target	AdobeRGB
Display Profile	Considered
Rendering Intent	Relative colorimetric

(1) Five equally spaced code values for each channel

	RGB	Delta C	Delta H	Delta L	Delta E94
	63 255 127	25.51	17.42	2.28	7.65
	63 255 191	25.54	8.59	2.26	6.38
	63 255 255	21.99	1.57	2.43	5.63
	127 0 0	0.35	1.45	0.70	1.00
	127 0 63	1.47	0.41	0.54	0.71
	127 0 127	1.97	0.51	0.51	0.74
	127 0 191	1.69	0.85	0.51	0.69
	127 0 255	0.01	0.34	0.39	0.41
	127 63 0	0.43	1.90	0.75	1.26
	127 63 63	1.02	0.26	0.24	0.47
	127 63 127	1.48	0.54	0.18	0.58
	127 63 191	0.89	0.78	0.20	0.45
	127 63 255	0.97	0.34	0.56	0.59
	127 127 0	1.78	0.63	0.33	0.65
	127 127 63	1.14	0.70	0.25	0.65
	127 127 127	0.41	0.04	0.34	0.53
	127 127 191	0.71	0.10	0.36	0.45
	127 127 255	1.83	1.30	0.92	1.19
	127 191 0	0.91	1.48	0.26	0.67
	127 191 63	1.60	0.14	0.07	0.35
	127 191 127	0.79	0.02	0.06	0.24
	127 191 191	0.43	0.45	0.16	0.39
	127 191 255	0.16	1.15	0.57	0.91
	127 255 0	2.61	3.31	0.06	1.15
	127 255 63	1.13	4.59	0.05	1.61
	127 255 127	3.23	3.01	0.04	1.34
	127 255 191	4.06	1.43	0.08	1.16
	127 255 255	3.47	0.59	0.35	1.09
	191 0 0	3.29	2.00	0.29	1.08
	191 0 63	1.81	1.09	0.14	0.65
	191 0 127	1.49	0.36	0.26	0.45
	191 0 191	1.49	0.33	0.21	0.38
	191 0 255	0.41	0.34	0.35	0.38
	191 63 0	2.40	1.39	0.06	0.78
	191 63 63	0.66	1.55	0.06	0.77
	191 63 127	0.13	0.07	0.09	0.10
	191 63 191	0.39	0.24	0.17	0.22
	191 63 255	1.59	0.23	0.62	0.68
	191 127 0	0.73	0.34	0.07	0.24
	191 127 63	0.83	1.72	0.34	1.01
	191 127 127	0.58	0.50	0.38	0.55
	191 127 191	0.83	0.16	0.46	0.54
	191 127 255	2.36	0.68	0.84	1.05
	191 191 0	0.01	0.13	0.01	0.06
	191 191 63	1.39	0.18	0.32	0.47
	191 191 127	0.08	0.27	0.33	0.38
	191 191 191	0.37	0.03	0.40	0.54

# Colorimetric Report

## Page (4/4)



CCalc 2.4  
 Copyright © 2018, Denis Freund  
 All Rights Reserved  
 lic. for PRAD ProAdviser

Date	Tuesday, November 5, 2019
Tester	Denis Freund
Display	ViewSonic VP3481
Sensor	X-Rite i1 Display Pro (Corr.: WLED, XR)
Testchart	In accordance with ISO 12646:2007 (1)
Target	AdobeRGB
Display Profile	Considered
Rendering Intent	Relative colorimetric

(1) Five equally spaced code values for each channel

	RGB	Delta C	Delta H	Delta L	Delta E94
	191 191 255	1.19	0.66	0.68	0.93
	191 255 0	0.27	0.88	0.41	0.52
	191 255 63	1.01	1.65	0.28	0.72
	191 255 127	0.62	1.01	0.25	0.55
	191 255 191	1.36	0.18	0.27	0.52
	191 255 255	0.89	0.26	0.02	0.42
	255 0 0	8.57	5.19	6.48	6.89
	255 0 63	12.63	2.75	6.37	6.82
	255 0 127	9.60	9.42	6.13	7.49
	255 0 191	4.64	11.66	5.76	7.45
	255 0 255	2.71	11.24	4.85	6.35
	255 63 0	9.16	7.15	5.49	6.29
	255 63 63	13.53	0.44	5.34	5.89
	255 63 127	11.63	7.10	5.19	6.48
	255 63 191	6.72	10.62	4.83	6.70
	255 63 255	4.66	10.83	4.03	5.81
	255 127 0	6.64	11.02	3.47	5.74
	255 127 63	11.19	7.47	3.22	5.13
	255 127 127	13.05	0.10	3.10	4.51
	255 127 191	9.86	6.89	2.89	5.15
	255 127 255	7.10	9.07	2.31	4.89
	255 191 0	0.38	9.39	1.52	4.16
	255 191 63	2.67	9.23	1.26	4.40
	255 191 127	5.83	6.89	1.19	4.44
	255 191 191	8.18	0.53	1.10	3.55
	255 191 255	6.06	5.43	0.72	3.92
	255 255 0	3.06	0.40	0.38	0.66
	255 255 63	1.91	0.21	0.26	0.45
	255 255 127	0.62	0.17	0.23	0.29
	255 255 191	0.93	0.22	0.17	0.43
	255 255 255 (1)	-	-	-	-
	Average (2)	6.38	4.47	1.32	2.92
	Maximum (2)	33.26	30.97	6.48	10.49

(1) Visual adaptation to display whitepoint is assumed; CIELAB reference values are adapted (Bradford transformation) to display whitepoint  
 (2) Without Black

Color Space	Gamut Volume CIELAB D50
AdobeRGB	73%