

Colorimetric Report

Page (1/4)



CCalc 2.4
 Copyright © 2018, Denis Freund
 All Rights Reserved
 lic. for PRAD ProAdviser

Date	Tuesday, November 5, 2019
Tester	Denis Freund
Display	ViewSonic VP3481
Sensor	X-Rite i1 Pro
Testchart	In accordance with ISO 12646:2007 (1)
Target	ECI-RGB v2
Display Profile	Considered
Rendering Intent	Relative colorimetric

(1) Five equally spaced code values for each channel

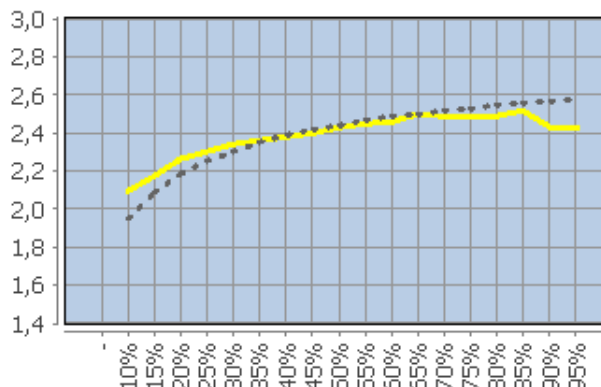
White Point (CCT)	6519 Kelvin
White Point XYZ (normalized)	95.51 100.00 109.98
DeltaE to D50/ D65	20.16/ 1.05
Assumed Target Whitepoint (2)	6500 Kelvin
DeltaE to Assumed Target Whitepoint	1.14
Brightness	137.09 cd/m ²
Black Point	0.08 cd/m ²
Contrast (x:1)	1714:1
Gradation (Average)	2.39

(2) Daylight

	Percent	Kelvin	Delta C	Delta E	Gamma
	5	-	-	-	-
	10	6272	0.40	2.62	2.09
	15	6283	0.70	1.77	2.17
	20	6335	0.70	1.70	2.26
	25	6341	0.63	1.14	2.30
	30	6399	0.39	0.69	2.34
	35	6487	0.12	0.26	2.36
	40	6534	0.09	0.15	2.38
	45	6508	0.39	0.51	2.40
	50	6520	0.48	0.50	2.43
	55	6486	0.25	0.34	2.45
	60	6507	0.32	0.42	2.46
	65	6510	0.27	0.27	2.50
	70	6467	0.48	0.58	2.49
	75	6497	0.15	0.41	2.49
	80	6479	0.47	0.62	2.49
	85	6507	0.56	0.59	2.52
	90	6519	0.80	0.96	2.43
	95	6532	0.09	0.30	2.43
	100 (3)	6520	-	-	-
	Average (4)	-	0.41	0.66	2.39
	Maximum (4)	-	0.8	1.77	-
	Range (4)	-	1.42	-	-

(3) Visual adaptation to display whitepoint is assumed
 (4) Only luminance > 1% considered

Corresponding Gamma



Colorimetric Report

Page (2/4)



CCalc 2.4
 Copyright © 2018, Denis Freund
 All Rights Reserved
 lic. for PRAD ProAdviser

Date	Tuesday, November 5, 2019
Tester	Denis Freund
Display	ViewSonic VP3481
Sensor	X-Rite i1 Display Pro (Corr.: WLED, XR)
Testchart	In accordance with ISO 12646:2007 (1)
Target	ECI-RGB v2
Display Profile	Considered
Rendering Intent	Relative colorimetric

(1) Five equally spaced code values for each channel

	RGB	Delta C	Delta H	Delta L	Delta E94
	0 0 0	0.45	0.00	0.54	0.70
	0 0 63	2.10	4.23	0.73	2.93
	0 0 127	2.38	8.65	0.31	4.36
	0 0 191	1.18	9.46	1.18	4.13
	0 0 255	2.71	8.10	3.46	4.54
	0 63 0	16.75	10.00	0.31	7.32
	0 63 63	15.23	1.50	0.37	6.05
	0 63 127	3.70	12.60	0.33	7.72
	0 63 191	0.81	12.15	1.54	5.97
	0 63 255	2.59	10.31	3.44	5.30
	0 127 0	21.57	19.14	1.62	9.29
	0 127 63	22.53	14.71	2.38	9.00
	0 127 127	23.27	1.89	2.34	7.09
	0 127 191	12.63	14.39	2.91	8.99
	0 127 255	5.91	15.66	3.57	8.01
	0 191 0	28.37	28.16	2.80	11.03
	0 191 63	30.04	24.92	3.10	10.86
	0 191 127	33.46	14.26	3.21	9.25
	0 191 191	32.62	3.55	3.31	8.17
	0 191 255	21.86	16.73	4.33	10.29
	0 255 0	35.77	39.08	3.49	12.78
	0 255 63	37.68	36.13	3.90	12.62
	0 255 127	42.20	27.85	3.79	11.58
	0 255 191	44.99	14.55	4.05	9.88
	0 255 255	42.29	3.05	4.36	9.00
	63 0 0	2.59	2.75	0.58	2.05
	63 0 63	1.50	1.33	1.50	1.80
	63 0 127	3.27	1.84	1.39	1.89
	63 0 191	2.65	1.69	1.12	1.43
	63 0 255	0.53	1.60	0.68	0.90
	63 63 0	4.73	0.86	1.74	2.58
	63 63 63	0.62	0.11	1.17	1.33
	63 63 127	0.80	0.62	0.87	1.00
	63 63 191	1.38	0.79	0.91	1.04
	63 63 255	1.23	2.91	1.31	1.75
	63 127 0	2.50	0.06	0.67	0.90
	63 127 63	0.11	1.90	0.14	1.07
	63 127 127	4.17	0.43	0.26	1.61
	63 127 191	4.09	5.30	1.01	3.47
	63 127 255	2.86	7.69	1.95	4.09
	63 191 0	15.45	16.96	1.55	6.98
	63 191 63	16.03	16.08	1.91	7.29
	63 191 127	19.89	10.08	2.03	6.55
	63 191 191	21.48	2.51	2.16	5.95
	63 191 255	15.16	12.10	3.26	7.77
	63 255 0	27.10	31.92	2.74	10.72
	63 255 63	28.95	29.81	3.17	10.71

Colorimetric Report

Page (3/4)



CCalc 2.4
 Copyright © 2018, Denis Freund
 All Rights Reserved
 lic. for PRAD ProAdviser

Date	Tuesday, November 5, 2019
Tester	Denis Freund
Display	ViewSonic VP3481
Sensor	X-Rite i1 Display Pro (Corr.: WLED, XR)
Testchart	In accordance with ISO 12646:2007 (1)
Target	ECI-RGB v2
Display Profile	Considered
Rendering Intent	Relative colorimetric

(1) Five equally spaced code values for each channel

	RGB	Delta C	Delta H	Delta L	Delta E94
	63 255 127	33.27	23.11	3.06	9.88
	63 255 191	36.22	12.77	3.33	8.61
	63 255 255	35.25	2.62	3.67	7.88
	127 0 0	4.29	6.20	0.46	3.13
	127 0 63	1.75	0.91	0.41	0.81
	127 0 127	2.28	0.50	0.42	0.77
	127 0 191	1.37	1.35	0.39	0.77
	127 0 255	0.56	0.25	0.43	0.45
	127 63 0	5.10	5.57	0.68	3.19
	127 63 63	1.30	0.49	0.31	0.63
	127 63 127	1.55	0.40	0.24	0.63
	127 63 191	0.30	1.00	0.08	0.50
	127 63 255	1.51	0.69	0.78	0.87
	127 127 0	4.38	0.42	0.43	1.26
	127 127 63	1.47	0.77	0.29	0.81
	127 127 127	0.33	0.03	0.13	0.35
	127 127 191	0.02	0.18	0.10	0.16
	127 127 255	1.50	1.45	0.82	1.13
	127 191 0	0.49	1.48	0.28	0.70
	127 191 63	1.63	0.28	0.01	0.39
	127 191 127	0.68	0.37	0.02	0.29
	127 191 191	0.52	0.26	0.07	0.26
	127 191 255	0.53	1.87	0.24	1.09
	127 255 0	6.44	11.22	0.72	3.96
	127 255 63	7.54	10.96	0.85	4.13
	127 255 127	10.55	8.74	1.04	4.01
	127 255 191	13.62	5.49	1.09	3.89
	127 255 255	15.37	1.06	1.51	3.97
	191 0 0	8.51	10.38	0.23	4.18
	191 0 63	2.23	1.79	0.17	0.92
	191 0 127	1.30	0.71	0.27	0.52
	191 0 191	1.27	0.23	0.17	0.32
	191 0 255	1.33	0.05	0.60	0.64
	191 63 0	8.82	9.42	0.26	4.04
	191 63 63	1.62	1.13	0.07	0.64
	191 63 127	0.75	0.48	0.02	0.31
	191 63 191	0.29	0.44	0.25	0.33
	191 63 255	1.45	0.04	0.62	0.67
	191 127 0	7.22	3.24	0.01	2.05
	191 127 63	0.95	1.32	0.31	0.78
	191 127 127	0.51	0.66	0.47	0.64
	191 127 191	0.66	0.46	0.48	0.59
	191 127 255	1.41	0.43	0.87	0.95
	191 191 0	3.80	0.38	0.16	0.82
	191 191 63	1.32	0.18	0.31	0.46
	191 191 127	0.05	0.32	0.25	0.32
	191 191 191	0.23	0.03	0.38	0.45

Colorimetric Report

Page (4/4)



CCalc 2.4
 Copyright © 2018, Denis Freund
 All Rights Reserved
 lic. for PRAD ProAdviser

Date	Tuesday, November 5, 2019
Tester	Denis Freund
Display	ViewSonic VP3481
Sensor	X-Rite i1 Display Pro (Corr.: WLED, XR)
Testchart	In accordance with ISO 12646:2007 (1)
Target	ECI-RGB v2
Display Profile	Considered
Rendering Intent	Relative colorimetric

(1) Five equally spaced code values for each channel

	RGB	Delta C	Delta H	Delta L	Delta E94
	191 191 255	0.82	0.67	0.64	0.83
	191 255 0	0.40	0.51	0.55	0.59
	191 255 63	1.61	1.34	0.18	0.64
	191 255 127	0.91	0.34	0.33	0.41
	191 255 191	1.44	0.11	0.19	0.47
	191 255 255	0.77	0.16	0.01	0.30
	255 0 0	29.74	13.45	9.01	10.70
	255 0 63	15.06	1.43	8.90	9.22
	255 0 127	13.92	11.92	8.32	9.90
	255 0 191	7.21	14.63	7.50	9.64
	255 0 255	4.30	13.86	5.60	7.69
	255 63 0	29.99	8.92	7.86	9.34
	255 63 63	16.02	2.38	7.63	8.11
	255 63 127	16.39	8.57	7.15	8.56
	255 63 191	9.98	13.07	6.44	8.70
	255 63 255	5.72	13.24	4.88	7.20
	255 127 0	24.58	2.28	5.62	6.82
	255 127 63	14.74	9.32	5.22	6.91
	255 127 127	17.74	0.76	5.00	6.33
	255 127 191	13.51	8.42	4.30	6.73
	255 127 255	8.02	11.37	3.18	6.23
	255 191 0	13.35	9.71	3.07	5.35
	255 191 63	6.35	12.05	2.87	6.00
	255 191 127	10.70	7.83	2.66	5.57
	255 191 191	11.71	0.09	2.19	4.67
	255 191 255	7.27	7.05	1.23	4.91
	255 255 0	1.78	3.57	0.84	1.62
	255 255 63	2.39	3.09	0.78	1.55
	255 255 127	1.51	2.31	0.80	1.42
	255 255 191	1.37	1.28	0.43	1.06
	255 255 255 (1)	-	-	-	-
	Average (2)	9.54	6.58	1.89	4.23
	Maximum (2)	44.99	39.08	9.01	12.78

(1) Visual adaptation to display whitepoint is assumed; CIELAB reference values are adapted (Bradford transformation) to display whitepoint
 (2) Without Black

Color Space	Gamut Volume CIELAB D50
ECI-RGB v2	66%