

Colorimetric Report

Page (1/5)



CCalc 2.7
 Copyright © 2024, Denis Freund
 All Rights Reserved
 lic. for PRAD ProAdviser

| | |
|------------------|--|
| Date | Wednesday, April 29, 2026 |
| Tester | Simon Blohm |
| Display | Acer CB343CUR J0 |
| Sensor | X-Rite i1 Display Pro (Corr.: Generic) |
| Testchart | In accordance with ISO 12646:2007 (1) |
| Target | DCI-P3 RGB |
| Display Profile | Considered |
| Rendering Intent | Relative colorimetric |

(1) Five equally spaced code values for each channel

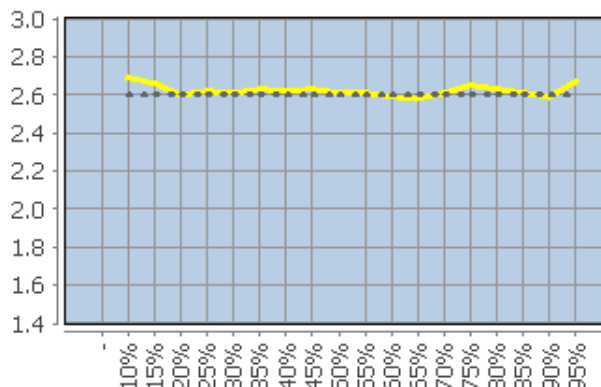
| | |
|-------------------------------------|--------------------------|
| White Point (CCT) | 6515 Kelvin |
| White Point XYZ (normalized) | 95.12 100.00 109.21 |
| DeltaE to D50/ D65 | 19.71/ 0.24 |
| Assumed Target Whitepoint (2) | 6500 Kelvin |
| DeltaE to Assumed Target Whitepoint | 0.33 |
| Brightness | 139.27 cd/m ² |
| Black Point | 0.05 cd/m ² |
| Contrast (x:1) | 2785:1 |
| Gradation (Average) | 2.62 |

(2) Daylight

| | Percent | Kelvin | Delta C | Delta E | Gamma |
|--|-------------|--------|---------|---------|-------|
| | 5 | - | - | - | - |
| | 10 | 6805 | 0.55 | 0.72 | 2.69 |
| | 15 | 6264 | 0.46 | 0.78 | 2.66 |
| | 20 | 6296 | 0.60 | 0.60 | 2.60 |
| | 25 | 6631 | 0.37 | 0.45 | 2.62 |
| | 30 | 6495 | 0.67 | 0.68 | 2.61 |
| | 35 | 6522 | 0.19 | 0.50 | 2.63 |
| | 40 | 6424 | 0.45 | 0.54 | 2.62 |
| | 45 | 6382 | 0.69 | 0.80 | 2.63 |
| | 50 | 6388 | 0.62 | 0.65 | 2.61 |
| | 55 | 6395 | 0.62 | 0.63 | 2.61 |
| | 60 | 6406 | 1.11 | 1.11 | 2.59 |
| | 65 | 6484 | 0.87 | 0.90 | 2.58 |
| | 70 | 6509 | 0.20 | 0.22 | 2.61 |
| | 75 | 6492 | 0.32 | 0.50 | 2.65 |
| | 80 | 6482 | 0.26 | 0.35 | 2.63 |
| | 85 | 6471 | 0.35 | 0.35 | 2.61 |
| | 90 | 6486 | 0.22 | 0.22 | 2.59 |
| | 95 | 6494 | 0.41 | 0.43 | 2.67 |
| | 100 (3) | 6515 | - | - | - |
| | Average (4) | - | 0.5 | 0.56 | 2.62 |
| | Maximum (4) | - | 1.11 | 1.11 | - |
| | Range (4) | - | 1.69 | - | - |

(3) Visual adaptation to display whitepoint is assumed
 (4) Only luminance > 1% considered

Corresponding Gamma



Colorimetric Report

Page (2/5)



CCalc 2.7
 Copyright © 2024, Denis Freund
 All Rights Reserved
 lic. for PRAD ProAdviser

| | |
|------------------|--|
| Date | Wednesday, April 29, 2026 |
| Tester | Simon Blohm |
| Display | Acer CB343CUR J0 |
| Sensor | X-Rite i1 Display Pro (Corr.: Generic) |
| Testchart | In accordance with ISO 12646:2007 (1) |
| Target | DCI-P3 RGB |
| Display Profile | Considered |
| Rendering Intent | Relative colorimetric |

(1) Five equally spaced code values for each channel

| | RGB | Delta C | Delta H | Delta L | Delta E00 |
|--|------------|---------|---------|---------|-----------|
| | 0 0 0 | 0.72 | 0.00 | 0.35 | 0.89 |
| | 0 0 63 | 2.16 | 0.56 | 0.07 | 1.21 |
| | 0 0 127 | 0.03 | 2.32 | 1.38 | 1.62 |
| | 0 0 191 | 0.98 | 2.66 | 1.26 | 1.59 |
| | 0 0 255 | 3.56 | 0.20 | 0.11 | 0.53 |
| | 0 63 0 | 5.95 | 1.04 | 0.87 | 2.34 |
| | 0 63 63 | 2.42 | 1.21 | 0.56 | 1.88 |
| | 0 63 127 | 0.27 | 2.09 | 0.96 | 1.84 |
| | 0 63 191 | 0.64 | 2.49 | 0.98 | 1.65 |
| | 0 63 255 | 3.16 | 0.27 | 0.13 | 0.54 |
| | 0 127 0 | 11.31 | 5.31 | 0.55 | 3.20 |
| | 0 127 63 | 3.36 | 0.75 | 0.30 | 0.95 |
| | 0 127 127 | 2.22 | 1.10 | 0.45 | 1.19 |
| | 0 127 191 | 1.34 | 2.17 | 0.82 | 1.90 |
| | 0 127 255 | 2.57 | 0.30 | 0.02 | 0.69 |
| | 0 191 0 | 14.97 | 6.23 | 0.27 | 3.06 |
| | 0 191 63 | 5.53 | 1.63 | 0.20 | 1.09 |
| | 0 191 127 | 4.21 | 2.14 | 0.27 | 1.30 |
| | 0 191 191 | 3.94 | 0.09 | 0.25 | 1.23 |
| | 0 191 255 | 2.55 | 1.00 | 0.23 | 1.02 |
| | 0 255 0 | 16.86 | 3.09 | 0.65 | 2.35 |
| | 0 255 63 | 7.83 | 4.21 | 0.54 | 1.53 |
| | 0 255 127 | 5.57 | 5.50 | 0.49 | 1.84 |
| | 0 255 191 | 5.77 | 3.82 | 0.42 | 1.90 |
| | 0 255 255 | 5.78 | 0.05 | 0.49 | 1.52 |
| | 63 0 0 | 1.67 | 1.33 | 0.17 | 1.19 |
| | 63 0 63 | 0.32 | 0.59 | 0.29 | 0.40 |
| | 63 0 127 | 0.40 | 1.70 | 1.20 | 1.22 |
| | 63 0 191 | 1.40 | 2.04 | 1.34 | 1.38 |
| | 63 0 255 | 3.14 | 0.41 | 0.49 | 0.60 |
| | 63 63 0 | 3.58 | 0.74 | 0.17 | 1.70 |
| | 63 63 63 | 0.42 | 0.11 | 0.20 | 0.46 |
| | 63 63 127 | 0.17 | 1.15 | 0.64 | 1.00 |
| | 63 63 191 | 0.45 | 1.38 | 0.90 | 1.05 |
| | 63 63 255 | 3.36 | 0.71 | 0.32 | 0.61 |
| | 63 127 0 | 8.79 | 8.06 | 0.56 | 3.86 |
| | 63 127 63 | 0.44 | 2.02 | 0.29 | 0.95 |
| | 63 127 127 | 0.90 | 1.08 | 0.42 | 0.94 |
| | 63 127 191 | 0.62 | 0.20 | 0.87 | 0.85 |
| | 63 127 255 | 2.93 | 1.86 | 0.18 | 1.00 |
| | 63 191 0 | 11.05 | 10.80 | 0.76 | 3.79 |
| | 63 191 63 | 1.32 | 2.75 | 0.69 | 1.07 |
| | 63 191 127 | 1.16 | 0.78 | 0.69 | 0.70 |
| | 63 191 191 | 0.04 | 0.30 | 0.70 | 0.59 |
| | 63 191 255 | 0.88 | 1.23 | 0.19 | 0.57 |
| | 63 255 0 | 14.40 | 5.95 | 0.35 | 2.40 |
| | 63 255 63 | 5.26 | 1.36 | 0.25 | 0.80 |

Colorimetric Report

Page (3/5)



CCalc 2.7
 Copyright © 2024, Denis Freund
 All Rights Reserved
 lic. for PRAD ProAdviser

| | |
|------------------|--|
| Date | Wednesday, April 29, 2026 |
| Tester | Simon Blohm |
| Display | Acer CB343CUR J0 |
| Sensor | X-Rite i1 Display Pro (Corr.: Generic) |
| Testchart | In accordance with ISO 12646:2007 (1) |
| Target | DCI-P3 RGB |
| Display Profile | Considered |
| Rendering Intent | Relative colorimetric |

(1) Five equally spaced code values for each channel

| | RGB | Delta C | Delta H | Delta L | Delta E00 |
|--|-------------|---------|---------|---------|-----------|
| | 63 255 127 | 2.80 | 3.24 | 0.20 | 1.05 |
| | 63 255 191 | 2.98 | 2.58 | 0.14 | 1.18 |
| | 63 255 255 | 3.34 | 0.08 | 0.21 | 0.88 |
| | 127 0 0 | 1.94 | 2.76 | 0.00 | 1.69 |
| | 127 0 63 | 0.51 | 0.52 | 0.11 | 0.32 |
| | 127 0 127 | 0.58 | 1.95 | 0.38 | 0.89 |
| | 127 0 191 | 0.96 | 1.98 | 0.82 | 1.07 |
| | 127 0 255 | 2.94 | 0.59 | 0.24 | 0.56 |
| | 127 63 0 | 3.62 | 3.74 | 0.07 | 2.64 |
| | 127 63 63 | 0.29 | 0.67 | 0.37 | 0.53 |
| | 127 63 127 | 0.56 | 1.72 | 0.09 | 0.88 |
| | 127 63 191 | 0.60 | 1.94 | 0.35 | 0.97 |
| | 127 63 255 | 3.59 | 0.13 | 0.05 | 0.57 |
| | 127 127 0 | 12.88 | 2.25 | 0.42 | 3.63 |
| | 127 127 63 | 2.59 | 0.75 | 0.13 | 1.01 |
| | 127 127 127 | 0.67 | 0.02 | 0.18 | 0.68 |
| | 127 127 191 | 1.08 | 0.46 | 0.31 | 0.71 |
| | 127 127 255 | 3.07 | 0.70 | 0.05 | 0.62 |
| | 127 191 0 | 13.75 | 8.05 | 0.51 | 3.88 |
| | 127 191 63 | 2.16 | 2.60 | 0.38 | 1.11 |
| | 127 191 127 | 0.29 | 0.28 | 0.39 | 0.35 |
| | 127 191 191 | 0.30 | 0.46 | 0.47 | 0.50 |
| | 127 191 255 | 1.12 | 1.76 | 0.01 | 0.83 |
| | 127 255 0 | 12.72 | 8.32 | 0.09 | 2.86 |
| | 127 255 63 | 3.04 | 1.60 | 0.01 | 0.62 |
| | 127 255 127 | 1.31 | 0.95 | 0.01 | 0.37 |
| | 127 255 191 | 0.54 | 0.86 | 0.11 | 0.38 |
| | 127 255 255 | 0.87 | 0.49 | 0.19 | 0.40 |
| | 191 0 0 | 4.28 | 4.81 | 0.07 | 2.50 |
| | 191 0 63 | 0.29 | 0.96 | 0.00 | 0.47 |
| | 191 0 127 | 0.55 | 1.33 | 0.18 | 0.54 |
| | 191 0 191 | 1.06 | 1.10 | 0.56 | 0.68 |
| | 191 0 255 | 2.07 | 1.13 | 0.33 | 0.61 |
| | 191 63 0 | 5.98 | 5.69 | 0.05 | 3.17 |
| | 191 63 63 | 1.56 | 1.45 | 0.04 | 0.85 |
| | 191 63 127 | 0.23 | 0.91 | 0.09 | 0.39 |
| | 191 63 191 | 0.06 | 0.98 | 0.13 | 0.38 |
| | 191 63 255 | 3.21 | 0.90 | 0.12 | 0.63 |
| | 191 127 0 | 13.84 | 5.48 | 0.31 | 4.40 |
| | 191 127 63 | 2.15 | 0.83 | 0.09 | 0.77 |
| | 191 127 127 | 0.30 | 0.37 | 0.09 | 0.28 |
| | 191 127 191 | 0.60 | 0.69 | 0.23 | 0.44 |
| | 191 127 255 | 3.33 | 0.46 | 0.37 | 0.80 |
| | 191 191 0 | 16.63 | 2.41 | 0.38 | 3.49 |
| | 191 191 63 | 3.51 | 0.40 | 0.28 | 0.81 |
| | 191 191 127 | 0.99 | 0.21 | 0.24 | 0.41 |
| | 191 191 191 | 0.30 | 0.02 | 0.39 | 0.45 |

Colorimetric Report

Page (4/5)



CCalc 2.7
 Copyright © 2024, Denis Freund
 All Rights Reserved
 lic. for PRAD ProAdviser

| | |
|------------------|--|
| Date | Wednesday, April 29, 2026 |
| Tester | Simon Blohm |
| Display | Acer CB343CUR J0 |
| Sensor | X-Rite i1 Display Pro (Corr.: Generic) |
| Testchart | In accordance with ISO 12646:2007 (1) |
| Target | DCI-P3 RGB |
| Display Profile | Considered |
| Rendering Intent | Relative colorimetric |

(1) Five equally spaced code values for each channel

| | RGB | Delta C | Delta H | Delta L | Delta E00 |
|--|-----------------|---------|---------|---------|-----------|
| | 191 191 255 | 1.59 | 0.79 | 0.01 | 0.57 |
| | 191 255 0 | 14.53 | 6.35 | 0.07 | 3.05 |
| | 191 255 63 | 3.80 | 1.55 | 0.02 | 0.79 |
| | 191 255 127 | 1.26 | 0.22 | 0.03 | 0.27 |
| | 191 255 191 | 0.96 | 0.92 | 0.06 | 0.52 |
| | 191 255 255 | 0.58 | 0.35 | 0.17 | 0.36 |
| | 255 0 0 | 8.84 | 5.62 | 1.72 | 3.20 |
| | 255 0 63 | 4.10 | 1.67 | 1.71 | 1.92 |
| | 255 0 127 | 2.05 | 1.47 | 1.79 | 1.81 |
| | 255 0 191 | 0.26 | 2.48 | 1.78 | 1.79 |
| | 255 0 255 | 1.88 | 1.02 | 1.47 | 1.33 |
| | 255 63 0 | 10.70 | 6.14 | 1.54 | 3.47 |
| | 255 63 63 | 4.81 | 1.17 | 1.43 | 1.65 |
| | 255 63 127 | 3.08 | 1.16 | 1.47 | 1.54 |
| | 255 63 191 | 1.81 | 1.37 | 1.44 | 1.39 |
| | 255 63 255 | 3.23 | 1.10 | 1.02 | 1.05 |
| | 255 127 0 | 16.09 | 6.61 | 1.09 | 4.30 |
| | 255 127 63 | 5.02 | 0.92 | 0.99 | 1.33 |
| | 255 127 127 | 3.87 | 0.38 | 0.95 | 1.22 |
| | 255 127 191 | 2.67 | 1.32 | 0.91 | 1.10 |
| | 255 127 255 | 4.28 | 1.16 | 0.43 | 0.98 |
| | 255 191 0 | 18.02 | 0.14 | 0.42 | 3.20 |
| | 255 191 63 | 3.90 | 3.33 | 0.38 | 2.00 |
| | 255 191 127 | 3.05 | 2.65 | 0.34 | 1.96 |
| | 255 191 191 | 2.92 | 0.63 | 0.36 | 1.28 |
| | 255 191 255 | 2.55 | 1.17 | 0.38 | 1.01 |
| | 255 255 0 | 16.08 | 2.86 | 0.12 | 2.80 |
| | 255 255 63 | 4.43 | 1.24 | 0.21 | 0.92 |
| | 255 255 127 | 1.41 | 0.30 | 0.22 | 0.37 |
| | 255 255 191 | 0.32 | 0.12 | 0.26 | 0.21 |
| | 255 255 255 (1) | - | - | - | - |
| | Average (2) | 3.76 | 0.00 | 0.46 | 1.35 |
| | Maximum (2) | 18.02 | 10.80 | 1.79 | 4.40 |

(1) Visual adaptation to display whitepoint is assumed; CIELAB reference values are adapted (Bradford transformation) to display whitepoint
 (2) Without Black

| | |
|-------------|-------------------------|
| Color Space | Gamut Volume CIELAB D50 |
| DCI-P3 RGB | 86% |

Colorimetric Report

Page (5/5)



CCalc 2.7
Copyright © 2024, Denis Freund
All Rights Reserved
lic. for PRAD ProAdviser

| | |
|------------------|--|
| Date | Wednesday, April 29, 2026 |
| Tester | Simon Blohm |
| Display | Acer CB343CUR J0 |
| Sensor | X-Rite i1 Display Pro (Corr.: Generic) |
| Testchart | In accordance with ISO 12646:2007 (1) |
| Target | DCI-P3 RGB |
| Display Profile | Considered |
| Rendering Intent | Relative colorimetric |

(1) Five equally spaced code values for each channel

| Property | Device adjustments |
|----------------------|--------------------|
| Backlight brightness | |
| Brightness | 19 |
| Contrast | 50 |
| RGB Gain | 42 50 43 |
| Gradation | 2,2 |
| Other | Farbraum: Standard |