

Colorimetric Report

Page (1/5)



CCalc 2.7
 Copyright © 2024, Denis Freund
 All Rights Reserved
 lic. for PRAD ProAdviser

| | |
|------------------|--|
| Date | Wednesday, May 20, 2026 |
| Tester | Simon Blohm |
| Display | MSI MPG 322UR QD-OLED X24 |
| Sensor | X-Rite i1 Display Pro (Corr.: Generic) |
| Testchart | In accordance with ISO 12646:2007 (1) |
| Target | Display Profile (Profile Quality) |
| Display Profile | Used as target |
| Rendering Intent | - |

(1) Five equally spaced code values for each channel

| | |
|-------------------------------------|--------------------------|
| White Point (CCT) | 6523 Kelvin |
| White Point XYZ (normalized) | 95.20 100.00 109.48 |
| DeltaE to D50/ D65 | 19.88/ 0.45 |
| Assumed Target Whitepoint (2) | 6500 Kelvin |
| DeltaE to Assumed Target Whitepoint | 0.54 |
| Brightness | 140.45 cd/m ² |
| Black Point | 0.00 cd/m ² |
| Contrast (x:1) | - |
| Gradation (Average) | 2.22 |

(2) Daylight

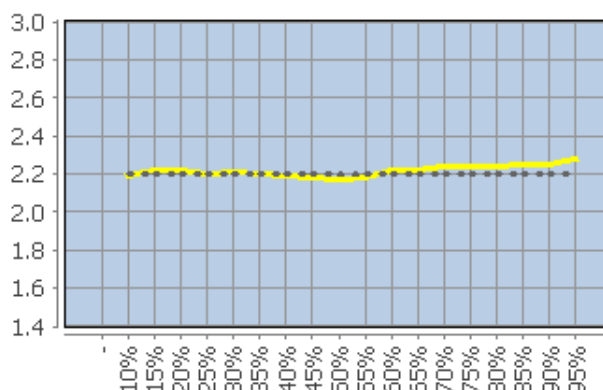
| | Percent | Kelvin | Delta C | Delta E (3) | Gamma |
|--|-------------|--------|---------|-------------|-------|
| | 5 | - | - | - | - |
| | 10 | 6401 | 0.40 | 0.43 | 2.19 |
| | 15 | 6595 | 0.35 | 0.51 | 2.22 |
| | 20 | 6535 | 0.66 | 0.75 | 2.22 |
| | 25 | 6457 | 0.41 | 0.41 | 2.20 |
| | 30 | 6420 | 0.43 | 0.46 | 2.21 |
| | 35 | 6506 | 0.53 | 0.53 | 2.20 |
| | 40 | 6523 | 0.48 | 0.52 | 2.19 |
| | 45 | 6439 | 0.58 | 0.64 | 2.18 |
| | 50 | 6458 | 0.47 | 0.64 | 2.17 |
| | 55 | 6467 | 0.41 | 0.50 | 2.18 |
| | 60 | 6506 | 0.41 | 0.53 | 2.22 |
| | 65 | 6481 | 0.25 | 0.33 | 2.22 |
| | 70 | 6490 | 0.39 | 0.59 | 2.24 |
| | 75 | 6531 | 0.42 | 0.54 | 2.24 |
| | 80 | 6470 | 0.38 | 0.49 | 2.24 |
| | 85 | 6472 | 0.45 | 0.53 | 2.25 |
| | 90 | 6457 | 0.54 | 0.57 | 2.25 |
| | 95 | 6474 | 0.98 | 1.00 | 2.28 |
| | 100 (4) | 6523 | - | - | - |
| | Average (5) | - | 0.48 | 0.56 | 2.22 |
| | Maximum (5) | - | 0.98 | 1.0 | - |
| | Range (5) | - | 1.62 | - | - |

(3) Reference: Display Profile; a*, b* = 0

(4) Visual adaptation to display whitepoint is assumed

(5) Only luminance > 1% considered

Corresponding Gamma



Colorimetric Report

Page (2/5)



CCalc 2.7
 Copyright © 2024, Denis Freund
 All Rights Reserved
 lic. for PRAD ProAdviser

| | |
|------------------|--|
| Date | Wednesday, May 20, 2026 |
| Tester | Simon Blohm |
| Display | MSI MPG 322UR QD-OLED X24 |
| Sensor | X-Rite i1 Display Pro (Corr.: Generic) |
| Testchart | In accordance with ISO 12646:2007 (1) |
| Target | Display Profile (Profile Quality) |
| Display Profile | Used as target |
| Rendering Intent | - |

(1) Five equally spaced code values for each channel

| | RGB | Delta C | Delta H | Delta L | Delta E00 |
|--|------------|---------|---------|---------|-----------|
| | 0 0 0 | 0.00 | 0.00 | 0.00 | 0.00 |
| | 0 0 63 | 1.82 | 0.72 | 0.15 | 0.57 |
| | 0 0 127 | 1.64 | 0.97 | 0.27 | 0.62 |
| | 0 0 191 | 0.46 | 0.11 | 0.19 | 0.16 |
| | 0 0 255 | 1.31 | 0.95 | 0.15 | 0.48 |
| | 0 63 0 | 1.40 | 0.00 | 0.55 | 0.57 |
| | 0 63 63 | 0.46 | 0.12 | 0.23 | 0.28 |
| | 0 63 127 | 0.10 | 0.20 | 0.11 | 0.13 |
| | 0 63 191 | 1.09 | 0.27 | 0.16 | 0.20 |
| | 0 63 255 | 2.34 | 0.77 | 0.21 | 0.44 |
| | 0 127 0 | 1.49 | 0.21 | 0.82 | 0.83 |
| | 0 127 63 | 0.88 | 0.50 | 0.73 | 0.75 |
| | 0 127 127 | 0.51 | 0.39 | 0.73 | 0.76 |
| | 0 127 191 | 0.18 | 0.44 | 0.65 | 0.69 |
| | 0 127 255 | 0.59 | 0.84 | 0.58 | 0.67 |
| | 0 191 0 | 1.38 | 0.49 | 0.58 | 0.53 |
| | 0 191 63 | 0.66 | 0.84 | 0.49 | 0.48 |
| | 0 191 127 | 0.30 | 1.03 | 0.43 | 0.54 |
| | 0 191 191 | 0.29 | 0.21 | 0.39 | 0.33 |
| | 0 191 255 | 0.26 | 0.95 | 0.39 | 0.49 |
| | 0 255 0 | 0.59 | 0.42 | 0.15 | 0.16 |
| | 0 255 63 | 0.06 | 0.88 | 0.09 | 0.23 |
| | 0 255 127 | 0.91 | 1.01 | 0.16 | 0.35 |
| | 0 255 191 | 0.26 | 0.70 | 0.11 | 0.29 |
| | 0 255 255 | 0.29 | 0.03 | 0.12 | 0.10 |
| | 63 0 0 | 1.63 | 0.34 | 0.13 | 0.64 |
| | 63 0 63 | 1.96 | 0.12 | 0.21 | 0.67 |
| | 63 0 127 | 1.42 | 1.00 | 0.31 | 0.64 |
| | 63 0 191 | 0.31 | 1.20 | 0.53 | 0.75 |
| | 63 0 255 | 0.95 | 1.07 | 0.18 | 0.54 |
| | 63 63 0 | 0.22 | 0.13 | 0.01 | 0.12 |
| | 63 63 63 | 0.52 | 0.04 | 0.16 | 0.65 |
| | 63 63 127 | 0.31 | 0.40 | 0.23 | 0.32 |
| | 63 63 191 | 0.71 | 0.42 | 0.41 | 0.51 |
| | 63 63 255 | 2.00 | 0.09 | 0.49 | 0.56 |
| | 63 127 0 | 0.90 | 0.05 | 0.52 | 0.54 |
| | 63 127 63 | 0.46 | 0.30 | 0.42 | 0.45 |
| | 63 127 127 | 0.27 | 0.49 | 0.43 | 0.55 |
| | 63 127 191 | 0.02 | 0.37 | 0.40 | 0.44 |
| | 63 127 255 | 0.85 | 0.67 | 0.36 | 0.43 |
| | 63 191 0 | 0.53 | 0.16 | 0.25 | 0.22 |
| | 63 191 63 | 0.03 | 0.45 | 0.26 | 0.25 |
| | 63 191 127 | 0.21 | 0.80 | 0.31 | 0.42 |
| | 63 191 191 | 0.16 | 0.31 | 0.28 | 0.28 |
| | 63 191 255 | 0.06 | 0.65 | 0.29 | 0.35 |
| | 63 255 0 | 0.21 | 0.07 | 0.08 | 0.06 |
| | 63 255 63 | 0.36 | 0.45 | 0.02 | 0.13 |

Colorimetric Report

Page (3/5)



CCalc 2.7
 Copyright © 2024, Denis Freund
 All Rights Reserved
 lic. for PRAD ProAdviser

| | |
|------------------|--|
| Date | Wednesday, May 20, 2026 |
| Tester | Simon Blohm |
| Display | MSI MPG 322UR QD-OLED X24 |
| Sensor | X-Rite i1 Display Pro (Corr.: Generic) |
| Testchart | In accordance with ISO 12646:2007 (1) |
| Target | Display Profile (Profile Quality) |
| Display Profile | Used as target |
| Rendering Intent | - |

(1) Five equally spaced code values for each channel

| | RGB | Delta C | Delta H | Delta L | Delta E00 |
|--|-------------|---------|---------|---------|-----------|
| | 63 255 127 | 0.84 | 1.00 | 0.02 | 0.33 |
| | 63 255 191 | 0.18 | 0.70 | 0.01 | 0.28 |
| | 63 255 255 | 0.07 | 0.09 | 0.02 | 0.05 |
| | 127 0 0 | 1.55 | 0.06 | 0.43 | 0.48 |
| | 127 0 63 | 1.20 | 0.66 | 0.28 | 0.49 |
| | 127 0 127 | 1.85 | 0.15 | 0.27 | 0.48 |
| | 127 0 191 | 1.49 | 0.73 | 0.17 | 0.43 |
| | 127 0 255 | 0.96 | 1.12 | 0.06 | 0.50 |
| | 127 63 0 | 0.91 | 0.29 | 0.44 | 0.46 |
| | 127 63 63 | 0.26 | 0.42 | 0.30 | 0.38 |
| | 127 63 127 | 1.07 | 0.31 | 0.32 | 0.45 |
| | 127 63 191 | 0.77 | 0.41 | 0.24 | 0.33 |
| | 127 63 255 | 0.15 | 0.65 | 0.15 | 0.36 |
| | 127 127 0 | 0.86 | 0.16 | 0.57 | 0.61 |
| | 127 127 63 | 0.05 | 0.22 | 0.50 | 0.52 |
| | 127 127 127 | 0.47 | 0.01 | 0.51 | 0.67 |
| | 127 127 191 | 0.15 | 0.01 | 0.47 | 0.45 |
| | 127 127 255 | 0.77 | 0.01 | 0.41 | 0.41 |
| | 127 191 0 | 0.51 | 0.03 | 0.34 | 0.28 |
| | 127 191 63 | 0.22 | 0.11 | 0.26 | 0.21 |
| | 127 191 127 | 0.57 | 0.53 | 0.30 | 0.39 |
| | 127 191 191 | 0.35 | 0.38 | 0.27 | 0.36 |
| | 127 191 255 | 0.51 | 0.08 | 0.32 | 0.30 |
| | 127 255 0 | 0.31 | 0.62 | 0.05 | 0.18 |
| | 127 255 63 | 0.67 | 0.12 | 0.03 | 0.11 |
| | 127 255 127 | 1.10 | 0.63 | 0.06 | 0.30 |
| | 127 255 191 | 0.44 | 0.50 | 0.08 | 0.25 |
| | 127 255 255 | 0.25 | 0.02 | 0.12 | 0.10 |
| | 191 0 0 | 1.24 | 0.18 | 0.41 | 0.44 |
| | 191 0 63 | 0.59 | 0.82 | 0.33 | 0.49 |
| | 191 0 127 | 1.25 | 0.88 | 0.35 | 0.52 |
| | 191 0 191 | 1.25 | 0.21 | 0.29 | 0.37 |
| | 191 0 255 | 0.78 | 0.85 | 0.20 | 0.38 |
| | 191 63 0 | 0.79 | 0.53 | 0.46 | 0.54 |
| | 191 63 63 | 0.06 | 0.35 | 0.35 | 0.39 |
| | 191 63 127 | 0.58 | 0.76 | 0.36 | 0.49 |
| | 191 63 191 | 0.68 | 0.09 | 0.32 | 0.35 |
| | 191 63 255 | 0.25 | 0.65 | 0.27 | 0.36 |
| | 191 127 0 | 0.83 | 0.46 | 0.64 | 0.64 |
| | 191 127 63 | 0.11 | 0.25 | 0.58 | 0.53 |
| | 191 127 127 | 0.23 | 0.42 | 0.61 | 0.60 |
| | 191 127 191 | 0.00 | 0.00 | 0.59 | 0.50 |
| | 191 127 255 | 0.58 | 0.33 | 0.54 | 0.50 |
| | 191 191 0 | 0.57 | 0.25 | 0.44 | 0.36 |
| | 191 191 63 | 0.19 | 0.11 | 0.42 | 0.31 |
| | 191 191 127 | 0.79 | 0.35 | 0.41 | 0.48 |
| | 191 191 191 | 0.21 | 0.03 | 0.38 | 0.35 |

Colorimetric Report

Page (4/5)



CCalc 2.7
 Copyright © 2024, Denis Freund
 All Rights Reserved
 lic. for PRAD ProAdviser

| | |
|------------------|--|
| Date | Wednesday, May 20, 2026 |
| Tester | Simon Blohm |
| Display | MSI MPG 322UR QD-OLED X24 |
| Sensor | X-Rite i1 Display Pro (Corr.: Generic) |
| Testchart | In accordance with ISO 12646:2007 (1) |
| Target | Display Profile (Profile Quality) |
| Display Profile | Used as target |
| Rendering Intent | - |

(1) Five equally spaced code values for each channel

| | RGB | Delta C | Delta H | Delta L | Delta E00 |
|--|-----------------|---------|---------|---------|-----------|
| | 191 191 255 | 0.47 | 0.08 | 0.34 | 0.34 |
| | 191 255 0 | 0.03 | 0.48 | 0.08 | 0.18 |
| | 191 255 63 | 0.59 | 0.28 | 0.09 | 0.15 |
| | 191 255 127 | 1.50 | 0.07 | 0.00 | 0.33 |
| | 191 255 191 | 0.82 | 0.17 | 0.02 | 0.27 |
| | 191 255 255 | 0.54 | 0.03 | 0.00 | 0.23 |
| | 255 0 0 | 0.54 | 0.19 | 0.15 | 0.17 |
| | 255 0 63 | 0.32 | 0.88 | 0.02 | 0.37 |
| | 255 0 127 | 0.24 | 1.30 | 0.05 | 0.46 |
| | 255 0 191 | 0.71 | 0.49 | 0.03 | 0.19 |
| | 255 0 255 | 0.49 | 0.34 | 0.01 | 0.12 |
| | 255 63 0 | 0.02 | 0.52 | 0.09 | 0.24 |
| | 255 63 63 | 0.44 | 0.40 | 0.09 | 0.21 |
| | 255 63 127 | 0.26 | 1.10 | 0.05 | 0.42 |
| | 255 63 191 | 0.03 | 0.53 | 0.02 | 0.17 |
| | 255 63 255 | 0.19 | 0.13 | 0.05 | 0.06 |
| | 255 127 0 | 0.14 | 0.93 | 0.27 | 0.48 |
| | 255 127 63 | 0.80 | 0.39 | 0.21 | 0.30 |
| | 255 127 127 | 1.07 | 0.47 | 0.18 | 0.38 |
| | 255 127 191 | 0.70 | 0.24 | 0.17 | 0.24 |
| | 255 127 255 | 1.16 | 0.03 | 0.17 | 0.27 |
| | 255 191 0 | 0.01 | 0.84 | 0.16 | 0.43 |
| | 255 191 63 | 0.47 | 0.26 | 0.13 | 0.19 |
| | 255 191 127 | 1.07 | 0.06 | 0.13 | 0.32 |
| | 255 191 191 | 0.68 | 0.06 | 0.08 | 0.28 |
| | 255 191 255 | 0.88 | 0.02 | 0.13 | 0.30 |
| | 255 255 0 | 0.00 | 0.01 | 0.04 | 0.02 |
| | 255 255 63 | 0.57 | 0.04 | 0.03 | 0.10 |
| | 255 255 127 | 1.37 | 0.01 | 0.06 | 0.32 |
| | 255 255 191 | 0.70 | 0.29 | 0.07 | 0.34 |
| | 255 255 255 (1) | - | - | - | - |
| | Average (2) | 0.64 | 0.41 | 0.26 | 0.38 |
| | Maximum (2) | 2.34 | 1.30 | 0.82 | 0.83 |

(1) Visual adaptation to display whitepoint is assumed; CIELAB reference values are adapted (Bradford transformation) to display whitepoint
 (2) Without Black

| Color Space | Gamut Volume CIELAB D50 |
|--------------------------|-------------------------|
| sRGB | 99% |
| AdobeRGB | 93% |
| ECI-RGB v2 | 85% |
| DCI-P3 RGB | 99% |
| ISO Coated v2 (FOGRA39L) | 99% |

Colorimetric Report

Page (5/5)



CCalc 2.7
Copyright © 2024, Denis Freund
All Rights Reserved
lic. for PRAD ProAdviser

| | |
|------------------|--|
| Date | Wednesday, May 20, 2026 |
| Tester | Simon Blohm |
| Display | MSI MPG 322UR QD-OLED X24 |
| Sensor | X-Rite i1 Display Pro (Corr.: Generic) |
| Testchart | In accordance with ISO 12646:2007 (1) |
| Target | Display Profile (Profile Quality) |
| Display Profile | Used as target |
| Rendering Intent | - |

(1) Five equally spaced code values for each channel

| Property | Device adjustments |
|----------------------|--------------------|
| Backlight brightness | |
| Brightness | 37 |
| Contrast | 70 |
| RGB Gain | 97 96 100 |
| Gradation | 2,2 |
| Other | |