

# Colorimetric Report

## Page (1/5)



CCalc 2.7  
 Copyright © 2024, Denis Freund  
 All Rights Reserved  
 lic. for PRAD ProAdviser

Date	Wednesday, June 17, 2026
Tester	Simon Blohm
Display	BenQ RD280UG
Sensor	X-Rite i1 Display Pro (Corr.: Generic)
Testchart	In accordance with ISO 12646:2007 (1)
Target	Display Profile (Profile Quality)
Display Profile	Used as target
Rendering Intent	-

(1) Five equally spaced code values for each channel

White Point (CCT)	6504 Kelvin
White Point XYZ (normalized)	94.99 100.00 108.81
DeltaE to D50/ D65	19.47/ 0.11
Assumed Target Whitepoint (2)	6500 Kelvin
DeltaE to Assumed Target Whitepoint	0.05
Brightness	142.70 cd/m <sup>2</sup>
Black Point	0.09 cd/m <sup>2</sup>
Contrast (x:1)	1586:1
Gradation (Average)	2.20

(2) Daylight

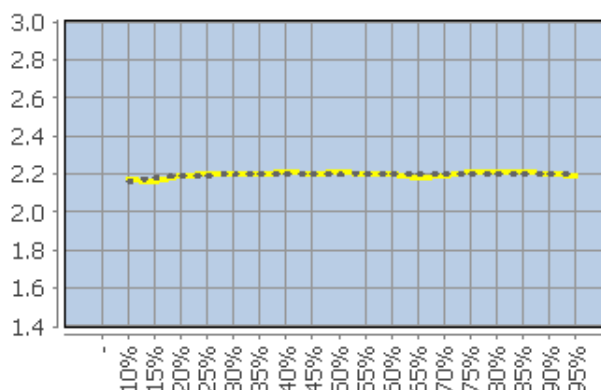
	Percent	Kelvin	Delta C	Delta E (3)	Gamma
	5	-	-	-	-
	10	6576	0.31	0.32	2.17
	15	6279	0.59	0.73	2.16
	20	6547	0.31	0.31	2.19
	25	6383	0.52	0.52	2.20
	30	6411	0.40	0.41	2.20
	35	6436	0.36	0.38	2.20
	40	6456	0.21	0.25	2.21
	45	6387	0.89	0.89	2.20
	50	6472	0.16	0.19	2.21
	55	6482	0.13	0.14	2.20
	60	6392	0.65	0.65	2.20
	65	6408	0.61	0.64	2.18
	70	6467	0.66	0.67	2.19
	75	6470	0.27	0.28	2.21
	80	6493	0.17	0.19	2.21
	85	6490	0.19	0.20	2.21
	90	6496	0.11	0.11	2.20
	95	6479	0.23	0.23	2.19
	100 (4)	6505	-	-	-
	Average (5)	-	0.38	0.4	2.2
	Maximum (5)	-	0.89	0.89	-
	Range (5)	-	1.18	-	-

(3) Reference: Display Profile; a\*, b\* = 0

(4) Visual adaptation to display whitepoint is assumed

(5) Only luminance > 1% considered

### Corresponding Gamma



# Colorimetric Report

## Page (2/5)



CCalc 2.7  
 Copyright © 2024, Denis Freund  
 All Rights Reserved  
 lic. for PRAD ProAdviser

Date	Wednesday, June 17, 2026
Tester	Simon Blohm
Display	BenQ RD280UG
Sensor	X-Rite i1 Display Pro (Corr.: Generic)
Testchart	In accordance with ISO 12646:2007 (1)
Target	Display Profile (Profile Quality)
Display Profile	Used as target
Rendering Intent	-

(1) Five equally spaced code values for each channel

	RGB	Delta C	Delta H	Delta L	Delta E00
	0 0 0	0.03	0.00	0.00	0.03
	0 0 63	1.68	0.48	0.16	0.48
	0 0 127	2.05	0.09	0.59	0.58
	0 0 191	1.54	0.02	0.48	0.42
	0 0 255	0.15	0.04	0.07	0.06
	0 63 0	1.63	0.19	1.03	0.91
	0 63 63	0.54	0.24	0.53	0.50
	0 63 127	1.05	0.33	0.50	0.42
	0 63 191	1.24	0.34	0.27	0.28
	0 63 255	0.75	0.58	0.35	0.42
	0 127 0	2.32	0.07	1.72	1.71
	0 127 63	1.62	0.44	1.08	1.15
	0 127 127	0.69	0.03	0.90	0.92
	0 127 191	0.39	0.40	0.65	0.70
	0 127 255	0.76	0.88	0.44	0.55
	0 191 0	2.33	0.19	1.60	1.35
	0 191 63	1.86	0.11	1.16	1.00
	0 191 127	0.60	0.19	1.00	0.81
	0 191 191	0.90	0.32	0.81	0.71
	0 191 255	0.00	0.34	0.02	0.14
	0 255 0	1.63	0.36	1.02	0.71
	0 255 63	1.36	0.18	0.84	0.59
	0 255 127	0.98	0.02	0.85	0.57
	0 255 191	0.87	0.26	0.69	0.49
	0 255 255	0.59	0.73	0.32	0.44
	63 0 0	1.33	0.35	0.71	0.72
	63 0 63	0.52	0.11	0.33	0.29
	63 0 127	1.25	0.09	0.44	0.43
	63 0 191	1.00	0.15	0.27	0.29
	63 0 255	0.10	0.24	0.21	0.20
	63 63 0	0.48	0.06	0.62	0.49
	63 63 63	0.26	0.10	0.06	0.34
	63 63 127	1.14	0.14	0.00	0.33
	63 63 191	1.29	0.33	0.10	0.25
	63 63 255	1.49	0.49	0.78	0.72
	63 127 0	1.31	0.33	1.11	1.14
	63 127 63	1.14	0.01	0.53	0.63
	63 127 127	0.46	0.06	0.22	0.30
	63 127 191	0.78	0.41	0.01	0.25
	63 127 255	1.67	1.13	0.95	0.99
	63 191 0	1.74	0.29	1.26	1.06
	63 191 63	1.57	0.15	0.74	0.67
	63 191 127	0.81	0.01	0.54	0.48
	63 191 191	0.51	0.13	0.31	0.30
	63 191 255	0.54	0.12	0.52	0.42
	63 255 0	1.28	0.34	0.88	0.61
	63 255 63	1.62	0.06	0.67	0.50

# Colorimetric Report

## Page (3/5)



CCalc 2.7  
 Copyright © 2024, Denis Freund  
 All Rights Reserved  
 lic. for PRAD ProAdviser

Date	Wednesday, June 17, 2026
Tester	Simon Blohm
Display	BenQ RD280UG
Sensor	X-Rite i1 Display Pro (Corr.: Generic)
Testchart	In accordance with ISO 12646:2007 (1)
Target	Display Profile (Profile Quality)
Display Profile	Used as target
Rendering Intent	-

(1) Five equally spaced code values for each channel

	RGB	Delta C	Delta H	Delta L	Delta E00
	63 255 127	1.15	0.47	0.58	0.46
	63 255 191	1.33	0.47	0.53	0.50
	63 255 255	0.92	0.44	0.07	0.34
	127 0 0	1.99	0.05	1.15	0.98
	127 0 63	0.96	0.12	0.67	0.58
	127 0 127	1.17	0.18	0.63	0.57
	127 0 191	0.79	0.06	0.41	0.37
	127 0 255	0.12	0.49	0.29	0.35
	127 63 0	0.28	0.85	0.80	0.85
	127 63 63	0.82	0.27	0.23	0.40
	127 63 127	0.99	0.20	0.05	0.34
	127 63 191	1.13	0.02	0.19	0.30
	127 63 255	1.53	0.24	0.89	0.90
	127 127 0	0.21	0.21	1.03	1.03
	127 127 63	0.57	0.07	0.32	0.38
	127 127 127	0.15	0.03	0.11	0.19
	127 127 191	0.87	0.03	0.12	0.33
	127 127 255	2.11	0.42	1.25	1.18
	127 191 0	0.91	0.28	1.17	0.92
	127 191 63	1.20	0.01	0.63	0.56
	127 191 127	0.81	0.28	0.40	0.43
	127 191 191	0.91	0.22	0.15	0.47
	127 191 255	1.34	0.00	0.71	0.70
	127 255 0	0.91	0.48	0.87	0.59
	127 255 63	1.47	0.30	0.58	0.45
	127 255 127	1.92	0.23	0.49	0.52
	127 255 191	1.49	0.01	0.41	0.48
	127 255 255	1.68	0.47	0.09	0.61
	191 0 0	1.83	0.00	0.98	0.94
	191 0 63	0.81	0.52	0.70	0.71
	191 0 127	0.88	0.36	0.59	0.59
	191 0 191	0.68	0.12	0.47	0.48
	191 0 255	0.03	0.14	0.09	0.10
	191 63 0	0.98	2.25	0.73	1.37
	191 63 63	0.89	0.48	0.34	0.47
	191 63 127	1.09	0.07	0.14	0.31
	191 63 191	1.16	0.13	0.01	0.26
	191 63 255	1.46	0.13	0.61	0.64
	191 127 0	0.80	0.88	0.95	1.00
	191 127 63	0.67	0.56	0.31	0.49
	191 127 127	0.80	0.61	0.12	0.54
	191 127 191	1.12	0.18	0.24	0.44
	191 127 255	2.46	0.31	1.19	1.14
	191 191 0	0.16	0.07	0.95	0.69
	191 191 63	0.44	0.03	0.42	0.32
	191 191 127	0.29	0.23	0.27	0.28
	191 191 191	0.05	0.02	0.13	0.11

# Colorimetric Report

## Page (4/5)



CCalc 2.7  
 Copyright © 2024, Denis Freund  
 All Rights Reserved  
 lic. for PRAD ProAdviser

Date	Wednesday, June 17, 2026
Tester	Simon Blohm
Display	BenQ RD280UG
Sensor	X-Rite i1 Display Pro (Corr.: Generic)
Testchart	In accordance with ISO 12646:2007 (1)
Target	Display Profile (Profile Quality)
Display Profile	Used as target
Rendering Intent	-

(1) Five equally spaced code values for each channel

	RGB	Delta C	Delta H	Delta L	Delta E00
	191 191 255	1.36	0.25	0.77	0.68
	191 255 0	0.12	0.36	0.81	0.52
	191 255 63	1.09	0.43	0.56	0.44
	191 255 127	1.77	0.37	0.48	0.55
	191 255 191	1.36	0.31	0.32	0.55
	191 255 255	1.28	0.27	0.09	0.67
	255 0 0	1.36	0.19	0.61	0.61
	255 0 63	0.05	1.07	0.42	0.62
	255 0 127	0.54	0.19	0.42	0.41
	255 0 191	0.52	0.27	0.33	0.33
	255 0 255	0.18	0.29	0.03	0.10
	255 63 0	3.27	3.84	0.41	1.80
	255 63 63	0.77	0.79	0.18	0.42
	255 63 127	1.14	0.08	0.09	0.25
	255 63 191	1.26	0.15	0.05	0.26
	255 63 255	1.36	0.10	0.44	0.44
	255 127 0	2.80	2.48	0.48	1.37
	255 127 63	0.57	1.36	0.02	0.75
	255 127 127	1.39	0.63	0.14	0.51
	255 127 191	1.97	0.20	0.34	0.59
	255 127 255	3.36	0.05	1.03	1.07
	255 191 0	1.50	0.35	0.61	0.53
	255 191 63	0.25	0.43	0.20	0.29
	255 191 127	1.01	0.36	0.10	0.40
	255 191 191	1.07	0.58	0.06	0.63
	255 191 255	2.02	0.07	0.78	0.89
	255 255 0	0.85	0.22	0.61	0.40
	255 255 63	0.67	0.02	0.50	0.32
	255 255 127	1.49	0.15	0.34	0.43
	255 255 191	0.86	0.18	0.27	0.41
	255 255 255 (1)	-	-	-	-
	Average (2)	1.08	0.34	0.52	0.58
	Maximum (2)	3.36	3.84	1.72	1.80

(1) Visual adaptation to display whitepoint is assumed; CIELAB reference values are adapted (Bradford transformation) to display whitepoint  
 (2) Without Black

Color Space	Gamut Volume CIELAB D50
sRGB	99%
AdobeRGB	83%
ECI-RGB v2	76%
DCI-P3 RGB	86%
ISO Coated v2 (FOGRA39L)	95%

# Colorimetric Report

## Page (5/5)



CCalc 2.7  
Copyright © 2024, Denis Freund  
All Rights Reserved  
lic. for PRAD ProAdviser

Date	Wednesday, June 17, 2026
Tester	Simon Blohm
Display	BenQ RD280UG
Sensor	X-Rite i1 Display Pro (Corr.: Generic)
Testchart	In accordance with ISO 12646:2007 (1)
Target	Display Profile (Profile Quality)
Display Profile	Used as target
Rendering Intent	-

(1) Five equally spaced code values for each channel

Property	Device adjustments
Backlight brightness	
Brightness	39
Contrast	50
RGB Gain	91 89 100
Gradation	3
Other	Schärfe: 50 Sättigung: 5