

# Colorimetric Report

## Page (1/5)



CCalc 2.7  
 Copyright © 2024, Denis Freund  
 All Rights Reserved  
 lic. for PRAD ProAdviser

Date	Saturday, July 4, 2026
Tester	Simon Blohm
Display	Alienware AW3426DW
Sensor	X-Rite i1 Display Pro (Corr.: Generic)
Testchart	In accordance with ISO 12646:2007 (1)
Target	sRGB
Display Profile	Not considered
Rendering Intent	-

(1) Five equally spaced code values for each channel

White Point (CCT)	6499 Kelvin
White Point XYZ (normalized)	92.99 100.00 105.16
DeltaE to D50/ D65	17.87/ 4.30
Assumed Target Whitepoint (2)	6500 Kelvin
DeltaE to Assumed Target Whitepoint	4.22
Brightness	171.45 cd/m <sup>2</sup>
Black Point	0.00 cd/m <sup>2</sup>
Contrast (x:1)	-
Gradation (Average)	2.28

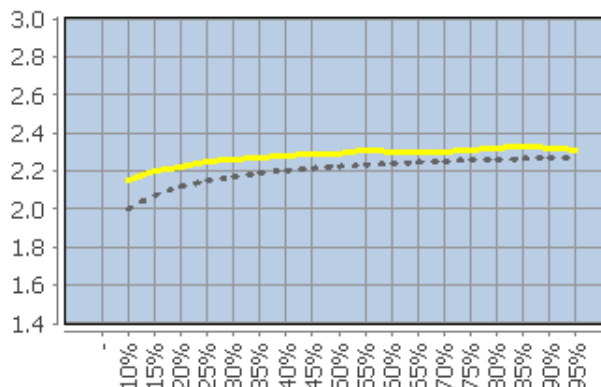
(2) Daylight

	Percent	Kelvin	Delta C	Delta E	Gamma
	5	-	-	-	-
	10	6349	0.62	2.69	2.15
	15	6456	0.30	2.43	2.20
	20	6590	0.34	2.07	2.22
	25	6504	0.31	1.92	2.25
	30	6494	0.22	1.71	2.26
	35	6450	0.44	1.62	2.27
	40	6481	0.09	1.32	2.28
	45	6499	0.38	1.41	2.29
	50	6444	0.66	1.28	2.29
	55	6449	0.50	1.20	2.31
	60	6509	0.17	0.87	2.30
	65	6510	0.17	0.67	2.30
	70	6480	0.20	0.56	2.30
	75	6484	0.25	0.55	2.31
	80	6482	0.13	0.44	2.32
	85	6500	0.06	0.34	2.33
	90	6523	0.36	0.41	2.32
	95	6497	0.04	0.09	2.31
	100 (3)	6500	-	-	-
	Average (4)	-	0.27	1.11	2.28
	Maximum (4)	-	0.66	2.43	-
	Range (4)	-	1.02	-	-

(3) Visual adaptation to display whitepoint is assumed

(4) Only luminance > 1% considered

### Corresponding Gamma



# Colorimetric Report

## Page (2/5)



C Calc 2.7  
 Copyright © 2024, Denis Freund  
 All Rights Reserved  
 lic. for PRAD ProAdviser

Date	Saturday, July 4, 2026
Tester	Simon Blohm
Display	Alienware AW3426DW
Sensor	X-Rite i1 Display Pro (Corr.: Generic)
Testchart	In accordance with ISO 12646:2007 (1)
Target	sRGB
Display Profile	Not considered
Rendering Intent	-

(1) Five equally spaced code values for each channel

	RGB	Delta C	Delta H	Delta L	Delta E00
	0 0 0	0.00	0.00	0.00	0.00
	0 0 63	5.70	3.27	0.04	2.60
	0 0 127	5.72	3.55	0.43	2.24
	0 0 191	5.58	4.26	0.89	2.32
	0 0 255	5.81	4.90	1.17	2.46
	0 63 0	1.97	0.04	1.99	1.55
	0 63 63	0.59	0.27	1.91	1.43
	0 63 127	1.11	0.40	1.63	1.23
	0 63 191	1.52	0.31	1.22	1.08
	0 63 255	1.21	1.04	0.88	1.01
	0 127 0	0.53	1.49	1.22	1.32
	0 127 63	0.73	0.84	1.25	1.28
	0 127 127	0.55	0.61	1.20	1.28
	0 127 191	1.08	0.68	1.11	1.15
	0 127 255	1.62	0.05	1.02	1.06
	0 191 0	0.64	1.65	0.54	0.72
	0 191 63	0.47	1.59	0.59	0.76
	0 191 127	0.97	1.03	0.54	0.70
	0 191 191	0.57	0.44	0.53	0.53
	0 191 255	0.75	0.21	0.49	0.44
	0 255 0	0.86	1.97	0.16	0.60
	0 255 63	0.81	1.87	0.14	0.60
	0 255 127	0.92	1.31	0.14	0.50
	0 255 191	0.70	0.44	0.14	0.28
	0 255 255	0.41	0.62	0.15	0.39
	63 0 0	2.24	1.03	1.65	1.55
	63 0 63	3.57	0.70	1.27	1.55
	63 0 127	3.16	2.47	0.74	1.56
	63 0 191	3.45	3.45	0.02	1.75
	63 0 255	4.54	4.37	0.57	2.05
	63 63 0	0.73	0.47	1.90	1.46
	63 63 63	0.30	0.04	1.85	1.43
	63 63 127	0.73	0.55	1.65	1.40
	63 63 191	1.26	0.85	1.24	1.23
	63 63 255	1.10	1.27	0.95	1.13
	63 127 0	0.08	1.53	1.21	1.37
	63 127 63	0.27	0.88	1.24	1.29
	63 127 127	0.38	0.38	1.23	1.27
	63 127 191	1.20	0.42	1.21	1.22
	63 127 255	1.50	0.36	1.04	1.13
	63 191 0	0.38	1.57	0.64	0.76
	63 191 63	0.11	1.50	0.60	0.75
	63 191 127	0.32	0.74	0.59	0.59
	63 191 191	0.07	0.12	0.58	0.45
	63 191 255	0.69	0.43	0.54	0.48
	63 255 0	0.84	2.16	0.20	0.68
	63 255 63	0.89	2.00	0.18	0.66

# Colorimetric Report

## Page (3/5)



C Calc 2.7  
 Copyright © 2024, Denis Freund  
 All Rights Reserved  
 lic. for PRAD ProAdviser

Date	Saturday, July 4, 2026
Tester	Simon Blohm
Display	Alienware AW3426DW
Sensor	X-Rite i1 Display Pro (Corr.: Generic)
Testchart	In accordance with ISO 12646:2007 (1)
Target	sRGB
Display Profile	Not considered
Rendering Intent	-

(1) Five equally spaced code values for each channel

	RGB	Delta C	Delta H	Delta L	Delta E00
	63 255 127	0.92	1.49	0.18	0.57
	63 255 191	0.82	0.53	0.18	0.35
	63 255 255	0.48	0.54	0.14	0.37
	127 0 0	0.09	1.07	1.24	1.11
	127 0 63	1.29	1.92	1.22	1.38
	127 0 127	1.88	0.70	1.04	0.97
	127 0 191	1.66	2.07	0.70	1.11
	127 0 255	1.72	2.73	0.40	1.21
	127 63 0	2.00	0.71	1.41	1.38
	127 63 63	0.38	1.22	1.41	1.44
	127 63 127	0.38	0.42	1.34	1.15
	127 63 191	0.39	1.30	1.15	1.24
	127 63 255	0.60	1.69	0.93	1.23
	127 127 0	1.52	1.18	1.10	1.37
	127 127 63	0.91	0.74	1.16	1.31
	127 127 127	0.50	0.05	1.13	1.33
	127 127 191	0.86	0.42	1.05	1.16
	127 127 255	1.21	0.63	0.94	1.04
	127 191 0	0.60	1.67	0.52	0.82
	127 191 63	0.47	1.57	0.57	0.83
	127 191 127	0.02	0.92	0.56	0.65
	127 191 191	0.38	0.25	0.51	0.48
	127 191 255	0.70	0.16	0.48	0.49
	127 255 0	0.04	2.09	0.09	0.69
	127 255 63	0.14	1.94	0.07	0.67
	127 255 127	0.36	1.47	0.07	0.57
	127 255 191	0.57	0.53	0.07	0.31
	127 255 255	0.32	0.41	0.09	0.29
	191 0 0	3.17	4.78	0.70	2.67
	191 0 63	0.08	3.51	0.71	1.86
	191 0 127	1.72	0.83	0.72	0.83
	191 0 191	1.51	1.02	0.58	0.73
	191 0 255	1.13	1.84	0.45	0.84
	191 63 0	3.95	3.28	0.86	2.22
	191 63 63	1.16	2.48	0.90	1.71
	191 63 127	0.66	1.08	0.86	0.98
	191 63 191	0.61	0.81	0.77	0.85
	191 63 255	0.38	1.58	0.70	0.94
	191 127 0	3.16	0.01	0.86	1.10
	191 127 63	2.09	0.39	0.89	1.07
	191 127 127	0.40	0.82	0.87	0.98
	191 127 191	0.07	0.38	0.85	0.77
	191 127 255	0.25	1.14	0.79	0.92
	191 191 0	2.03	0.99	0.42	0.75
	191 191 63	1.93	0.50	0.43	0.65
	191 191 127	1.03	0.45	0.46	0.61
	191 191 191	0.21	0.05	0.42	0.42

# Colorimetric Report

## Page (4/5)



CCalc 2.7  
 Copyright © 2024, Denis Freund  
 All Rights Reserved  
 lic. for PRAD ProAdviser

Date	Saturday, July 4, 2026
Tester	Simon Blohm
Display	Alienware AW3426DW
Sensor	X-Rite i1 Display Pro (Corr.: Generic)
Testchart	In accordance with ISO 12646:2007 (1)
Target	sRGB
Display Profile	Not considered
Rendering Intent	-

(1) Five equally spaced code values for each channel

	RGB	Delta C	Delta H	Delta L	Delta E00
	191 191 255	0.20	0.68	0.39	0.68
	191 255 0	1.15	1.68	0.05	0.69
	191 255 63	1.12	1.35	0.05	0.59
	191 255 127	0.43	1.22	0.08	0.56
	191 255 191	0.03	0.51	0.08	0.28
	191 255 255	0.23	0.11	0.07	0.16
	255 0 0	5.06	7.13	0.48	3.51
	255 0 63	1.09	4.72	0.53	2.28
	255 0 127	1.44	2.23	0.52	1.04
	255 0 191	1.75	0.19	0.42	0.51
	255 0 255	1.52	1.36	0.39	0.61
	255 63 0	4.61	5.42	0.60	2.88
	255 63 63	1.47	3.64	0.58	1.94
	255 63 127	0.73	2.15	0.59	1.08
	255 63 191	1.30	0.11	0.55	0.56
	255 63 255	1.06	1.31	0.52	0.65
	255 127 0	3.83	2.31	0.57	1.56
	255 127 63	2.30	2.19	0.60	1.48
	255 127 127	0.39	1.34	0.62	0.94
	255 127 191	0.62	0.09	0.61	0.51
	255 127 255	0.61	1.02	0.56	0.62
	255 191 0	3.21	0.66	0.23	0.78
	255 191 63	2.71	0.88	0.21	0.85
	255 191 127	1.48	0.88	0.24	0.82
	255 191 191	0.33	0.81	0.24	0.64
	255 191 255	0.43	0.58	0.25	0.41
	255 255 0	2.34	0.88	0.08	0.60
	255 255 63	2.08	0.85	0.05	0.60
	255 255 127	1.62	0.49	0.09	0.51
	255 255 191	0.96	0.11	0.18	0.41
	255 255 255 (1)	-	-	-	-
	Average (2)	1.30	1.32	0.68	1.04
	Maximum (2)	5.81	7.13	1.99	3.51

(1) Visual adaptation to display whitepoint is assumed; CIELAB reference values are adapted (Bradford transformation) to display whitepoint  
 (2) Without Black

Color Space	Gamut Volume CIELAB D50
sRGB	96%

# Colorimetric Report

## Page (5/5)



CCalc 2.7  
Copyright © 2024, Denis Freund  
All Rights Reserved  
lic. for PRAD ProAdviser

Date	Saturday, July 4, 2026
Tester	Simon Blohm
Display	Alienware AW3426DW
Sensor	X-Rite i1 Display Pro (Corr.: Generic)
Testchart	In accordance with ISO 12646:2007 (1)
Target	sRGB
Display Profile	Not considered
Rendering Intent	-

(1) Five equally spaced code values for each channel

Property	Device adjustments
Backlight brightness	
Brightness	75
Contrast	75
RGB Gain	
Gradation	2,2
Other	